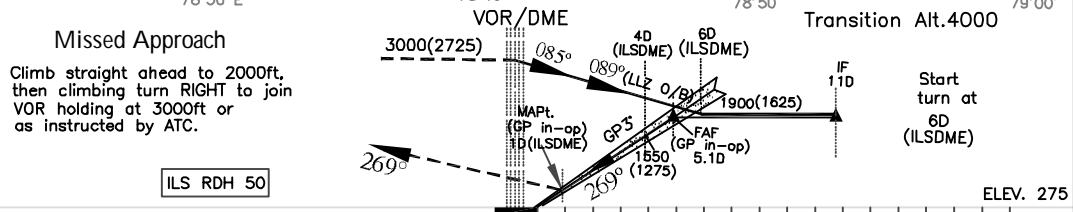
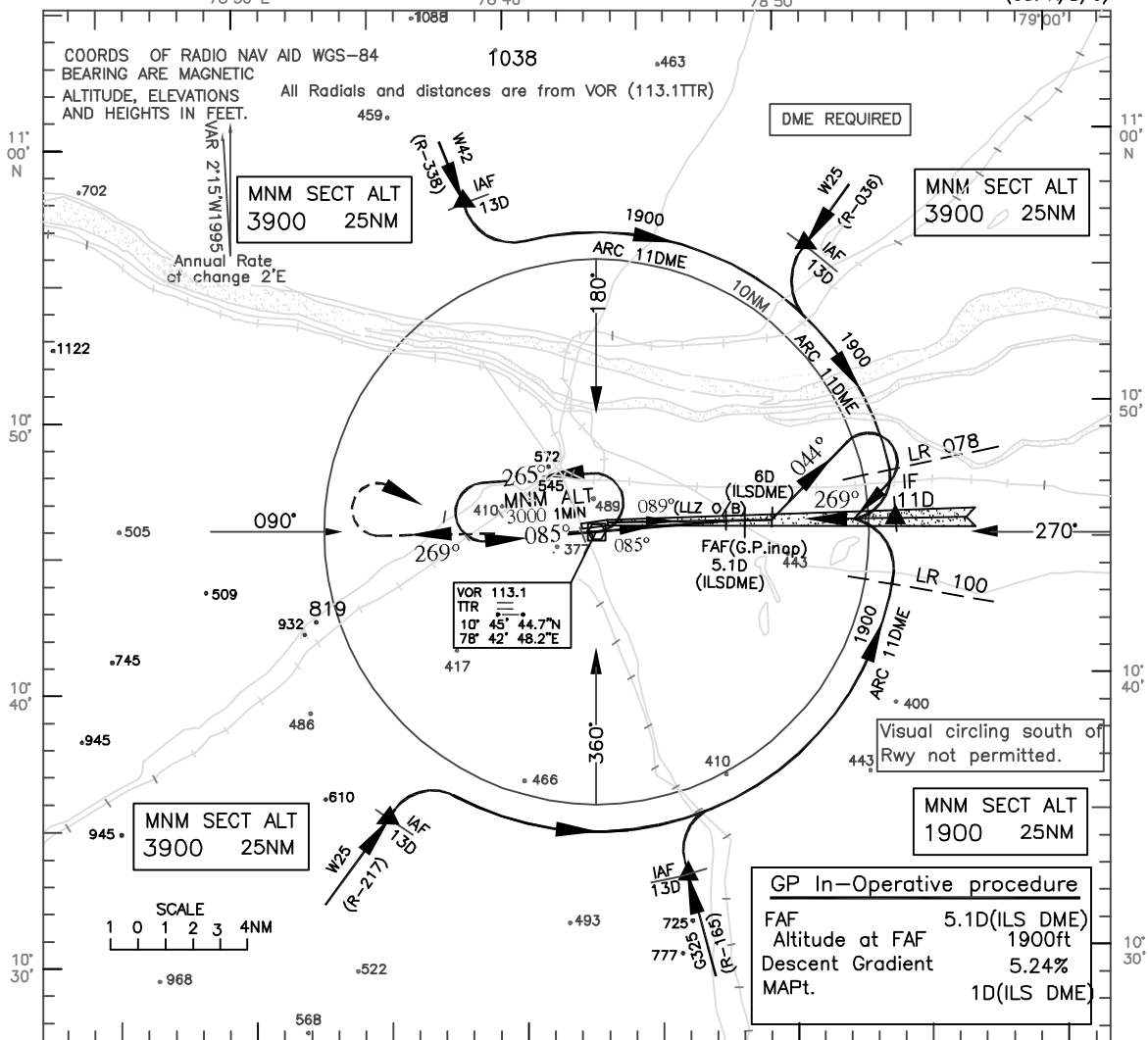


INSTRUMENT
APPROACH
CHART

AERODROME ELEV. 288ft.
HEIGHTS RELATED TO
THR RWY 27 ELEV.275ft

APP.124.0
TWR.118.3

TIRUCHIRAPALLI
INDIA
ILS(Y) RWY 27
(Cat A/B/C)



| | | | | | | | | | | | |
|--------------------------------|----------|--|---|------------|------|------------|------|-----|-----|--|--|
| Nautical miles from THR RWY 27 | | 0 1 2 3 4 5 6 7 8 9 10 11 12 13 14 15 16 17 | | | | | | | | | |
| O C A (H) | | Distance / Altitude information (GP in-op) | | | | | | | | | |
| CATEGORY OF AIRCRAFT | A/B | C | Distance(NM) | 5.1D | 5D | 4D | 3D | 2D | | | |
| STRAIGHT-IN | 520(245) | 520(245) | Altitude (ft.) | 1900 | 1870 | 1550 | 1240 | 920 | | | |
| VISUAL CIRCLING | 870(582) | 1010(722) | Rate of Descent /Ground speed information | | | | | | | | |
| GP In-Operative procedure | | Ground speed (kt.) | | 80 | 100 | 120 | 140 | 160 | | | |
| STRAIGHT-IN | 680(405) | 680(405) | Rate of descent (ft/min) | | 425 | 530 | 635 | 745 | 850 | | |
| VISUAL CIRCLING | 870(582) | 1010(722) | | | | | | | | | |
| AERODROME OPERATING MINIMA | | CATEGORY A | | CATEGORY B | | CATEGORY C | | | | | |
| STRAIGHT-IN | ALS | ALS OUT | ALS | ALS OUT | ALS | ALS OUT | | | | | |
| NORMAL MINIMA | 800 | 1200 | 800 | 1200 | 800 | 1200 | | | | | |
| RESTRICTED MINIMA | 1400 | 1800 | 1400 | 1800 | 900 | 1300 | | | | | |
| GP IN-OP NORMAL MINIMA | 2000 | 2400 | 2000 | 2400 | 2400 | 2800 | | | | | |
| RESTRICTED MINIMA | 2400 | 2800 | 2400 | 2800 | 2800 | 3200 | | | | | |
| NORMAL CIRCLING MINIMA | | 3600 | | 3600 | | 4000 | | | | | |
| RESTRICTED CIRCLING MINIMA | | 3600 | | 3600 | | 4800 | | | | | |
| DRG. NO. AAI/ 26-IALC/05/07.07 | | | | | | | | | | | |