

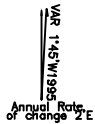
STANDARD DEPARTURE CHART
INSTRUMENT (SID) RNAV(VOR/DME)

Transition Altitude
 4000 FT

TWR 118.1
 APP/TAR 127.9
 ACC/RSR 118.9

CHENNAI/INDIA
RWY 07

IDASO 3 AVNOS 3 GIRNA 3
 DABAR 3 TANGO 3 TRICHY 3B
 TRICHY 3A CHARLI 3



Coordinates are in WGS-84 system
 Radials and tracks are magnetic
 Distances are in Nautical Miles

Minimum climb gradient 6.8% (41.5ft/NM) upto 300ft,
 thereafter 3.3%(20ft/NM) due to BLDG located at
 059.5°/2270 M from ARP

FOR RADIO COMMUNICATION FAILURE
 PROCEDURES REFER THE TEXT OF THE SIDs.

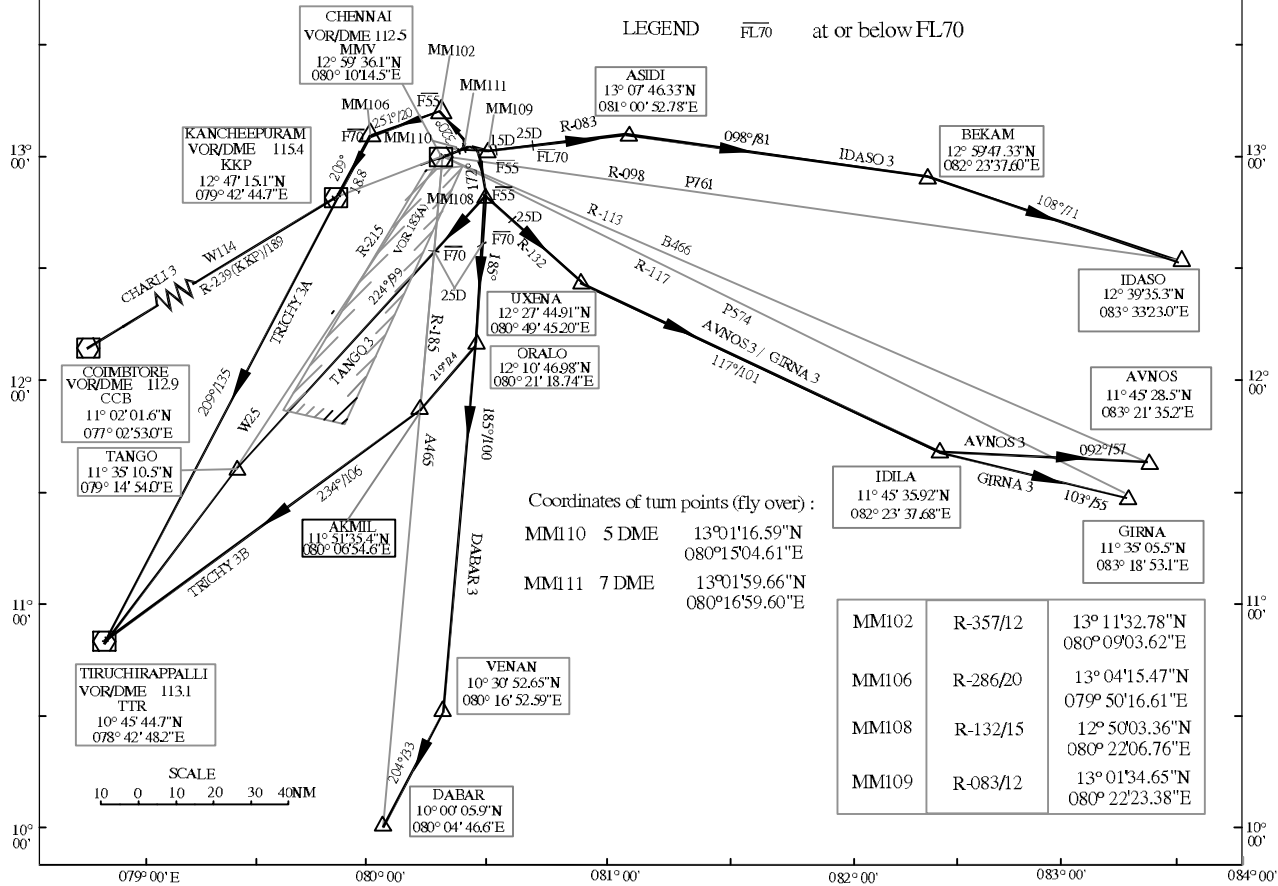
- Commence turn at :
 - 7DME for AVNOS 3, GIRNA 3, DABAR 3,TANGO 3,TRICHY 3B
 - 5DME for CHARLI 3,TRICHY 3A,IDASO 3



2.Level restrictions(unless otherwise specified by ATC)

- AVNOS 3/GIRNA 3 :
 -- Cross MM108 at or below FL55 and R-132/25D at or below FL70
- IDASO 3 :
 -- Cross R-083/15D at or below FL55 and 25D at or below FL70
- DABAR 3/TRICHY 3B/TANGO 3 :
 --Cross MM108 at or below FL55 and 25D at or below FL70
- CHARLI 3/TRICHY 3A :
 -- Cross MM 102 at or below FL55 and MM 106 at or below FL70

LEGEND $\overline{FL70}$ at or below FL70



Coordinates of turn points (fly over) :
 MM110 5 DME 13°01'16.59"N 080°15'04.61"E
 MM111 7 DME 13°01'59.66"N 080°16'59.60"E

MM102	R-357/12	13° 11'32.78"N 080° 09'03.62"E
MM106	R-286/20	13° 04'15.47"N 079° 50'16.61"E
MM108	R-132/15	12° 50'03.36"N 080° 22'06.76"E
MM109	R-083/12	13° 01'34.65"N 080° 22'23.38"E