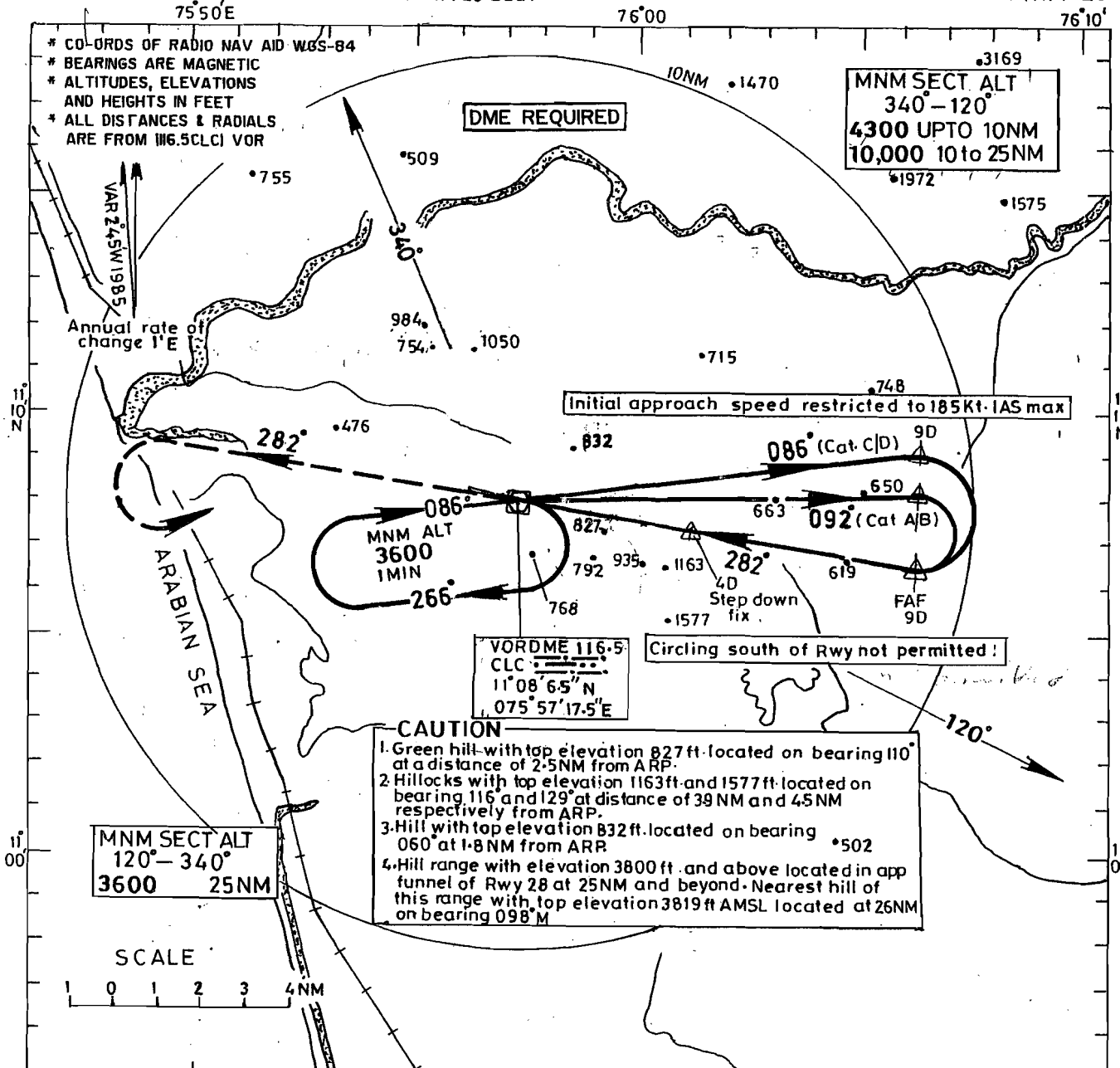


**INSTRUMENT APPROACH CHART**

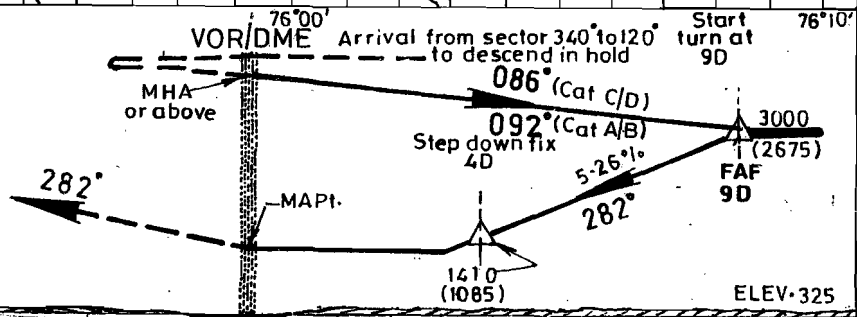
**AERODROME ELEV. 342 ft.**  
 HEIGHTS RELATED TO  
 THR RWY28 ELEV.325ft.

APP 123.35  
 TWR 123.35

**CALICUT INDIA**  
 VOR RWY 28



Transition Alt. 10000  
**MISSED APPROACH**  
 Climb straight ahead to 2600ft. then climbing turn LEFT to VOR to join holding at 3600 ft. or as instructed by A.T.C.



D.C.A.			DISTANCE ( VOR DME) / ALTITUDE INFORMATION						
CATEGORY OF AIRCRAFT	A/B	C/D	DISTANCE (NM)	9D	8D	7D	6D	5D	4D
STRAIGHT-IN	1380	1380	ALTITUDE(ft.)	3000	2680	2360	2040	1730	1410
CIRCLING	1380	1570	GROUND SPEED / RATE OF DESCENT INFORMATION						
GROUND SPEED (Kt.)				80	100	120	140	160	180
RATE OF DESCENT (ft/min)				425	535	640	745	850	960

DRG.NO. AAI / 5- IALC / 2002 / 01.08.03