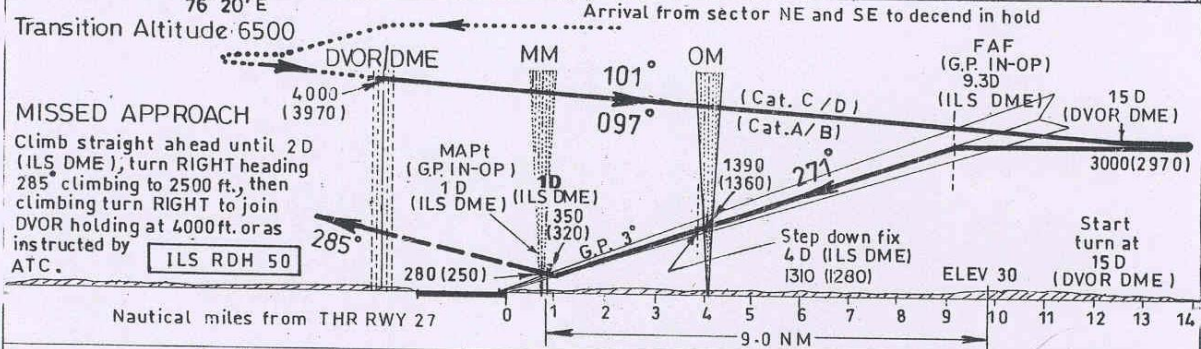
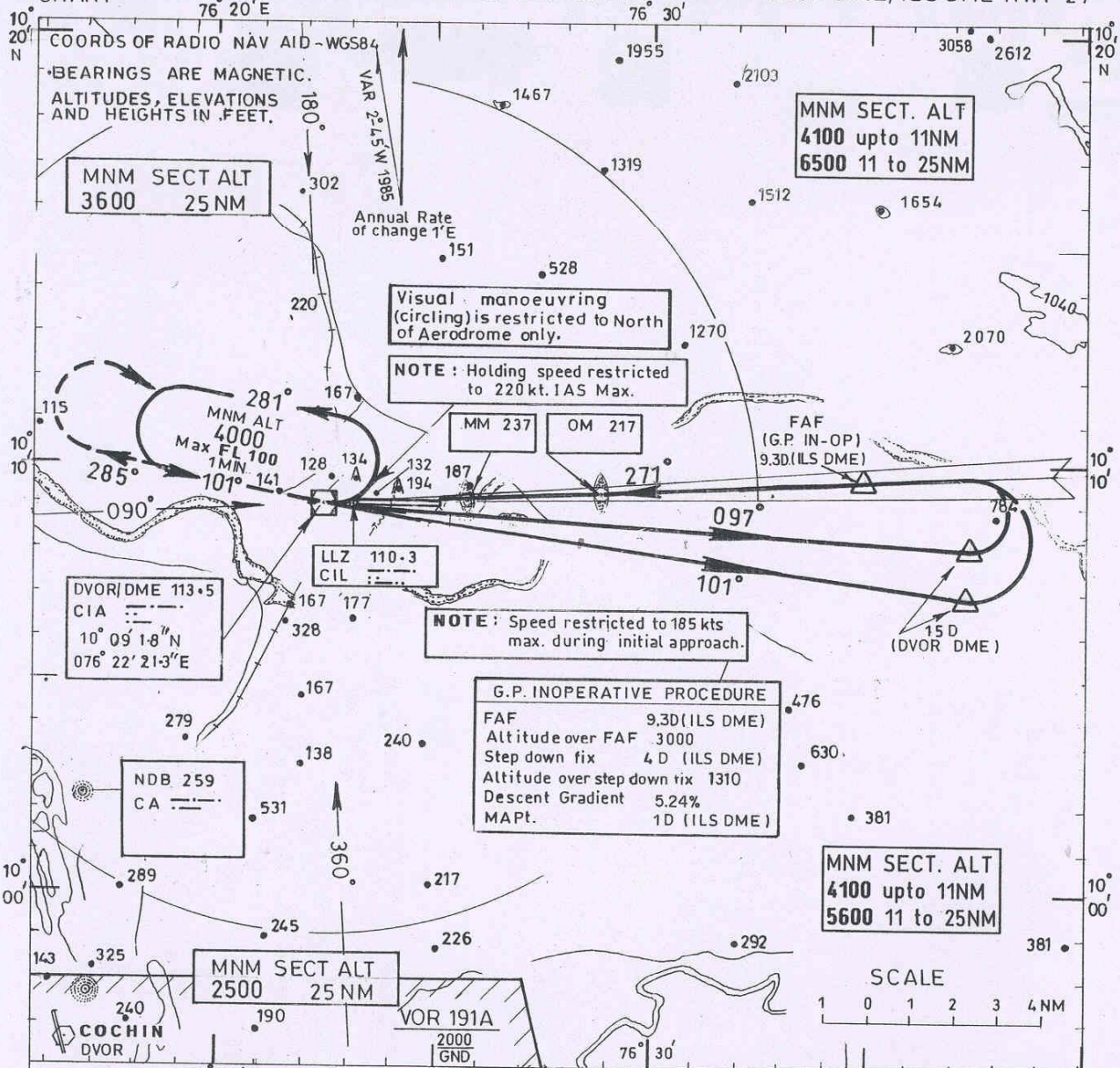


**INSTRUMENT APPROACH CHART**

**AERODROME ELEV 30 FT.**  
 HEIGHTS RELATED TO  
 THR RWY 27 ELEV 30 FT.

APP 119.750  
 TWR 118.800

**COCHIN INTERNATIONAL INDIA**  
 DVOR DME/ILS DME RWY 27



| O. C. A                    |     |     | Distance (ILS DME)/Altitude information (GP IN-OP) |      |      |      |      |      |      |      |     |
|----------------------------|-----|-----|--|------|------|------|------|------|------|------|-----|
| CATEGORY OF AIRCRAFT       | A/B | C/D | Distance (NM)                                      | 9.3D | 9D   | 8D   | 7D   | 6D   | 5D   | 4D   | 3D  |
| STRAIGHT-IN                | 300 | 320 | Altitude (FT)                                      | 3000 | 2900 | 2580 | 2260 | 1950 | 1630 | 1310 | 990 |
| VISUAL CIRCLING            | 690 | 730 | Rate of Descent and Ground Speed Information       |      |      |      |      |      |      |      |     |
| G.P. INOPERATIVE PROCEDURE |     |     | Distance from FAF to MAPt: 8.3 NM                  |      |      |      |      |      |      |      |     |
| STRAIGHT-IN                | 690 | 690 | Ground Speed (kt.)                                 | 80   | 100  | 120  | 140  | 160  | 180  |      |     |
| VISUAL CIRCLING            | 690 | 730 | Rate of Descent (ft./Min.)                         | 425  | 530  | 635  | 745  | 850  | 955  |      |     |

DRG.No. AAI /38 - IALC /2000/01.04.05

Compiled by AAI (NAD) INDIA

CANCELLATION : G-229/04