

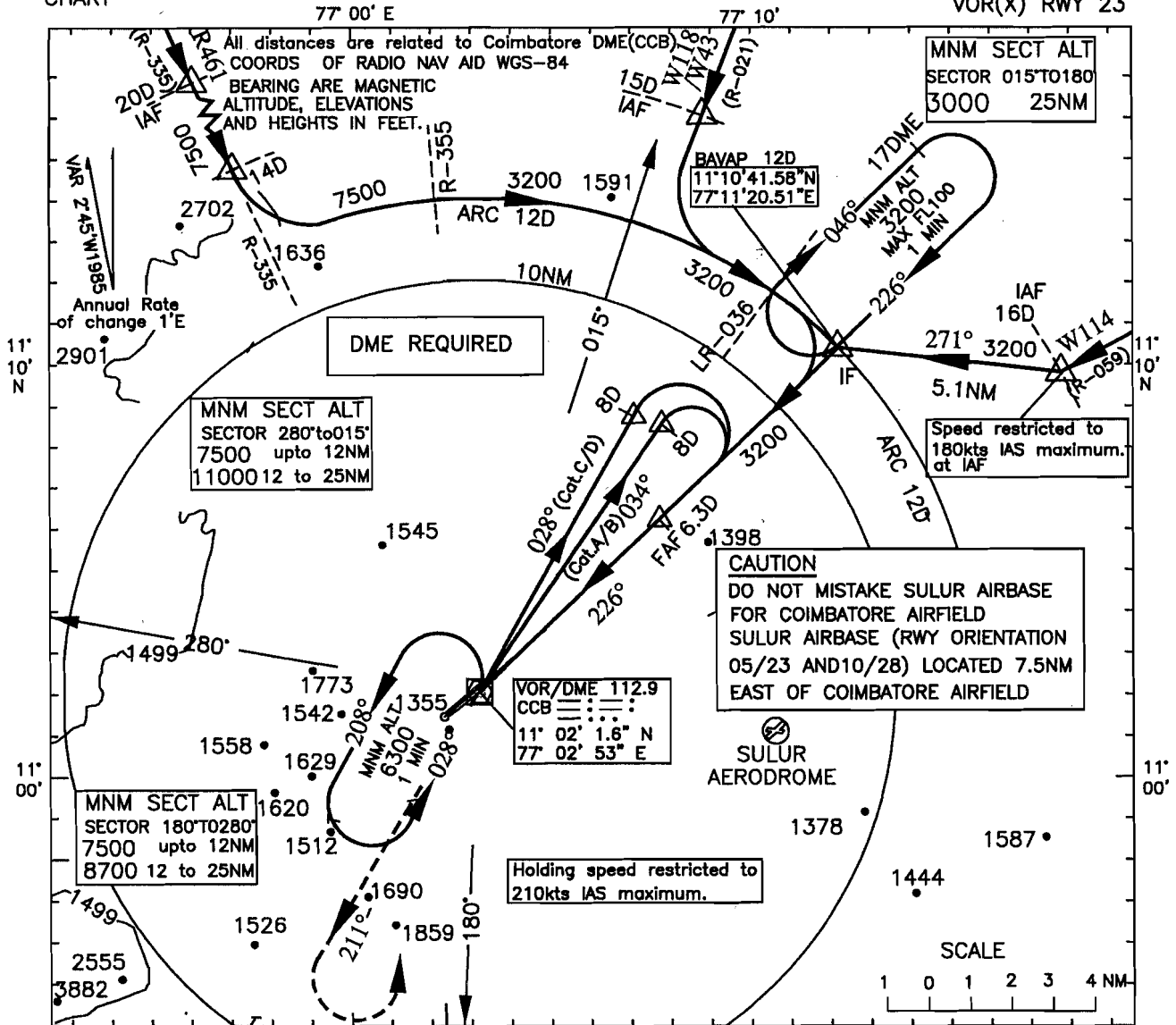
INSTRUMENT
APPROACH
CHART

AERODROME ELEV. 1324ft.
HEIGHTS RELATED TO
THR RWY 23-ELEV.1275ft

APP.122.3
TWR.122.3

COIMBATORE
INDIA

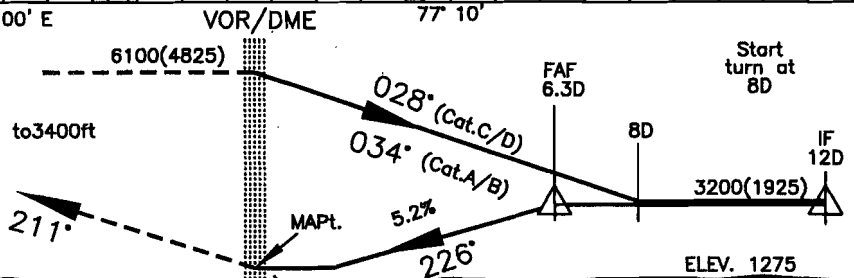
VOR(X) RWY 23



Transition Altitude 10000

MISSED APPROACH

Turn LEFT climb on track 211°M to 3400ft
then climbing turn LEFT to VOR
to join holding at 6100ft. or as
instructed by ATC.



NAUTICAL MILES FROM THR RWY 23

| O. C. A. | | | Distance (VORDME) Altitude information | | | | | | |
|--------------------------|------|------|--|------|------|------|------|------|------|
| CATEGORY OF AIRCRAFT | A/B | C/D | Distance(NM) | 63D | 6D | 5D | 4D | 3D | 2D |
| STRAIGHT-IN | 1730 | 1730 | Altitude (ft.) | 3200 | 3110 | 2800 | 2480 | 2160 | 1850 |
| VISUAL CIRCLING | 1820 | 2260 | Time and Rate of Descent Information | | | | | | |
| Ground speed (kt.) | | | | 80 | 100 | 120 | 140 | 160 | 180 |
| Rate of descent (ft/min) | | | | 420 | 525 | 630 | 735 | 845 | 950 |

| AERODROME OPERATING MINIMA (M) | CATEGORY A | | CATEGORY B | | CATEGORY C | | CATEGORY D | |
|--------------------------------|------------|---------|------------|---------|------------|---------|------------|---------|
| | ALS | ALS OUT | ALS | ALS OUT | ALS | ALS OUT | ALS | ALS OUT |
| NORMAL MINIMA (ST. IN) | 2000 | 2400 | 2000 | 2400 | 2400 | 2800 | 2800 | 3200 |
| RESTRICTED MINIMA (ST.IN) | 2400 | 2800 | 2400 | 2800 | 2800 | 3200 | 3200 | 3600 |
| NORMAL CIRCLING MINIMA | 3600 | | 3600 | | 5000 | | 5000 | |
| RESTRICTED CIRCLING MINIMA | 3600 | | 3600 | | 5000 | | 5000 | |

DRG. NO. AAI/06-IALC/07/11.05.07

CANCELLATION : AIP SUPPLEMENT NO:30/2007