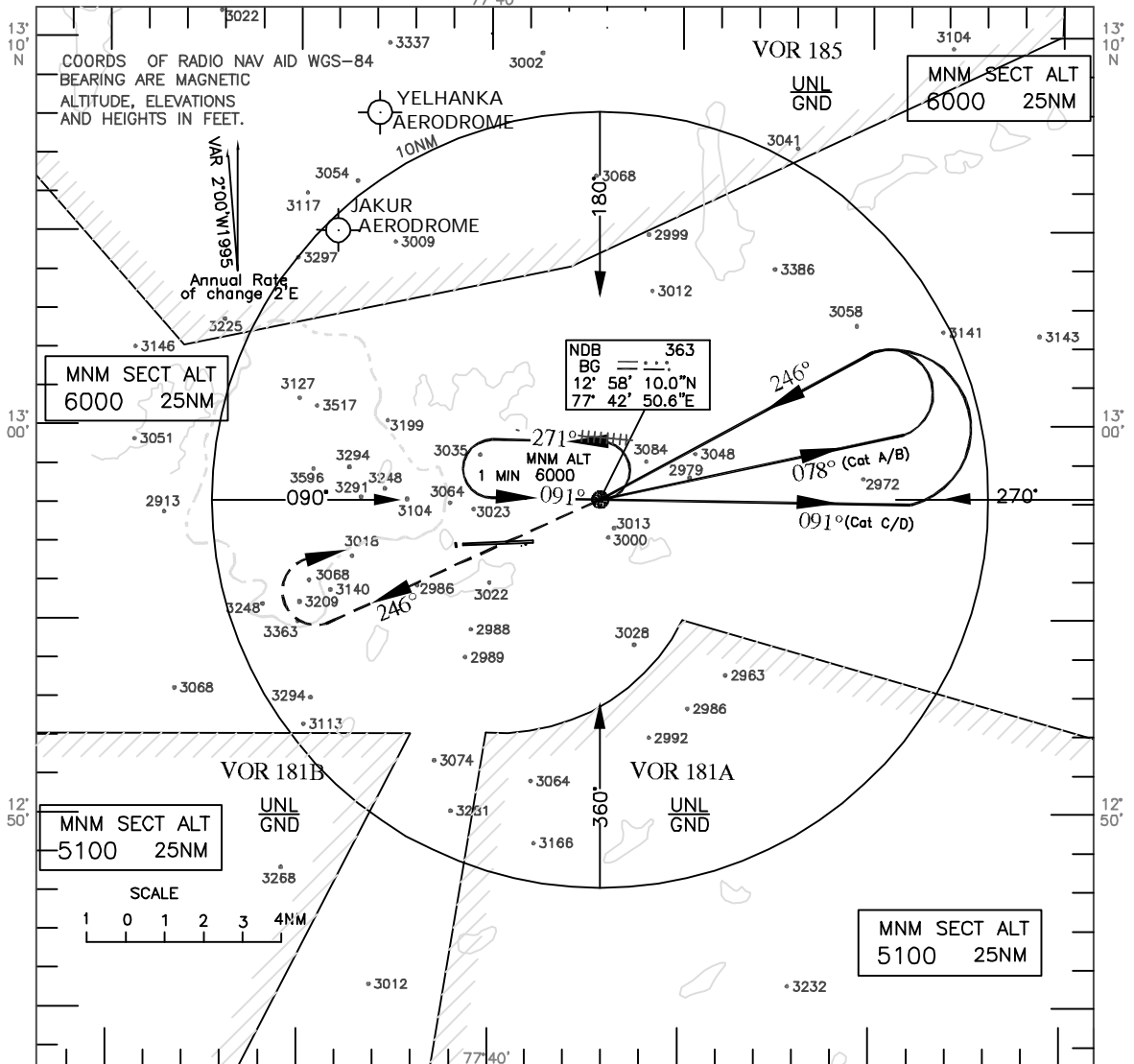


INSTRUMENT
APPROACH
CHART

HEIGHTS RELATED TO
AERODROME ELEV. 2912ft.
THR RWY 09 ELEV.2874ft
THR RWY 27 ELEV.2893ft

APP.127.7
TWR.123.5

BANGLORE
INDIA
NDB CIRCLING



Transition Alt 6000
Missed Approach

Climb straight ahead to 5000ft.,
then climbing turn RIGHT
to NDB to join holding at
6000ft. or as instructed by ATC.

6000(3088) NDB

078° (Cat.A/B)
091° (Cat.C/D)

4500(1588)

Start turn at
3Min (Cat.A/B)
2Min (Cat.C/D)

ELEV. 2912

Nautical miles from THR RWY

CATEGORY OF AIRCRAFT	A/B	C/D
STRAIGHT-IN	-	-
CIRCLING	3600	3960

DRG. NO. AAI/10-IALC/03/17.06.07