

STANDARD ARRIVAL CHART

INSTRUMENT (STAR)  
7630

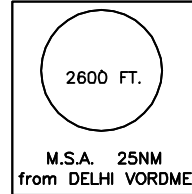
Transition Altitude 4000

APP.127.9  
TWR.118.1

DELHI  
RWY 10 / 09  
BASOT 2A/2C/4C SAM2A/2C/4C  
IGINO 2A/2C/4C AVGON 2A KIKIX2A/2C/4C

COORDS OF RADIO NAV AID WGS-84  
BEARING ARE MAGNETIC  
ALTITUDE, ELEVATIONS  
AND HEIGHTS IN FEET.

VAR 0°15'E1985  
Annual Rate of change 1'E



BASOT  
R-011/40D DPN  
N 029°13'16.68"  
E 077°14'54.39"

IGINO  
R-312/40D DPN  
N 029°01'05.67"  
E 076°32'07.43"

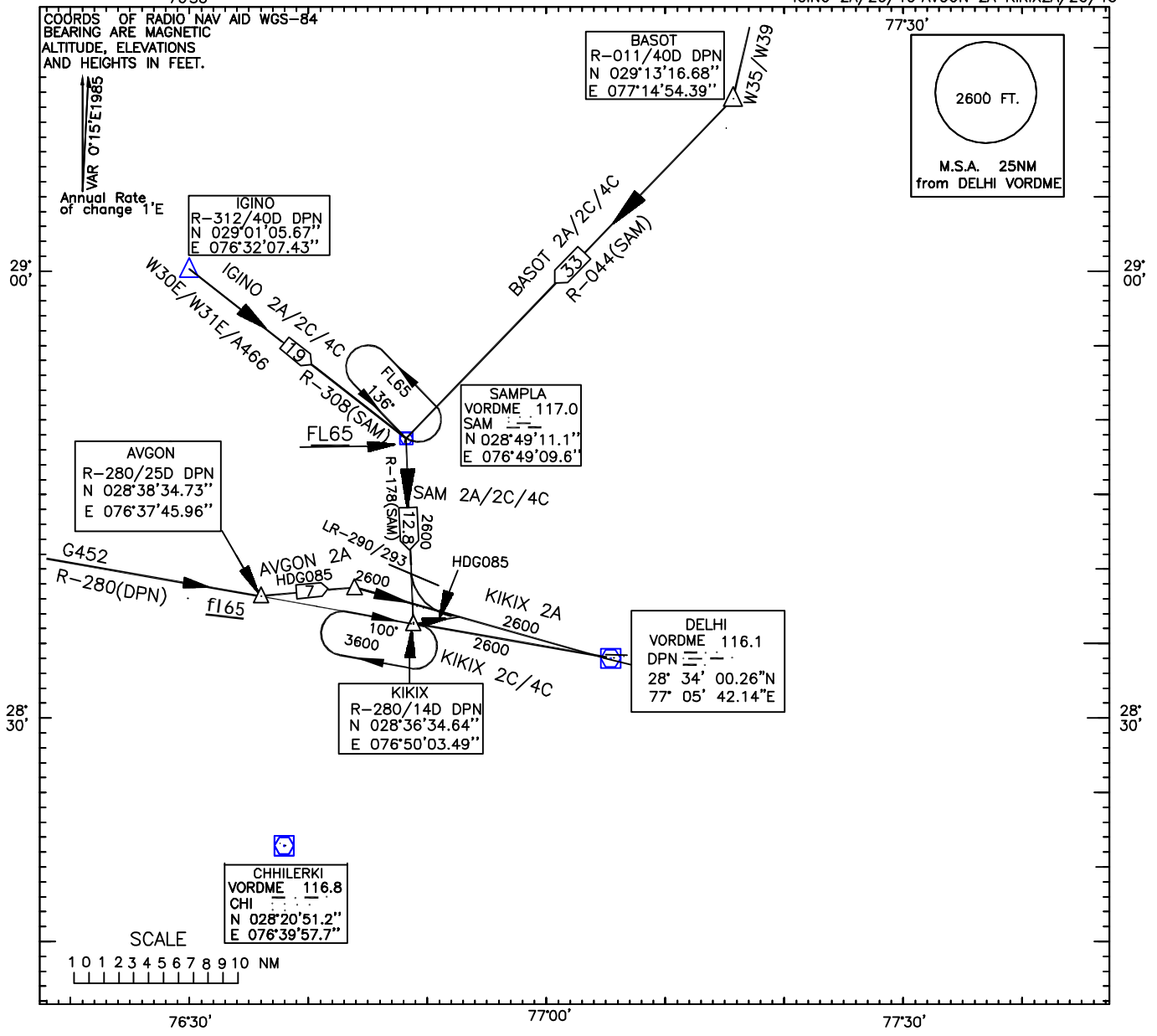
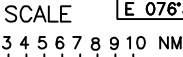
SAMPLA  
VORDME 117.0  
SAM  
N 028°49'11.1"  
E 076°49'09.6"

AVGON  
R-280/25D DPN  
N 028°38'34.73"  
E 076°37'45.96"

DELHI  
VORDME 116.1  
DPN  
N 28° 34' 00.26"N  
E 77° 05' 42.14"E

KIKIX  
R-280/14D DPN  
N 028°36'34.64"  
E 076°50'03.49"

CHHILERKI  
VORDME 116.8  
CHI  
N 028°20'51.2"  
E 076°39'57.7"



NOTE

- 1 Basic indicator followed by
  - I. 2A is applicable to ILS/DME Rwy10. Final approach track is 104°M(109.5 DEL).
  - II. 2C is applicable to VORDME Rwy10. Final approach track is 100°M(R-280 DPN).
  - III. 4C is applicable to VORDME Rwy09. Final approach track is 101°M(R-281 DPN).
- 2 Lead radial for ILS/DME and VORDME is 293&290 respectively
- 3 Procedure from SAMPLA  
Proceed on R-178(SAM) to KIKIX descending to 2600 ft. Crossing lead radial turn left to intercept final approach track of ILS/DME or VORDME descending to 2600ft respectively.
- 4 Procedure from AVGON  
AVGON 2A: Turn left on hdg085 to intercept LLZ (109.5 DEL) inbound track 104°M descending to 2600ft. Crossing 15D(ILS/DME) descend to 2600ft.
- 5 Procedure from KIKIX  
KIKIX 2A: Turn left on hdg085 to intercept LLZ (109.5 DEL) inbound track 104°M descending to 2600ft  
KIKIX 2C/4C: Establish on track 100°M(R-280)/101°M(R-281) for VORDME Rwy10/09 respectively descending to 2600ft
6. Refer to instrument approach chart for final approach procedure.
7. Holding procedure at VORDME fix (KIKIX) :  
One minute RIGHT hand pattern inbound track 100°M (R-280).  
Minimum holding altitude 3600 ft.

SPEED LIMIT  
BELOW FL 100 230kt IAS Max.  
BELOW FL 65 210kt IAS Max.

LEGEND  
FL65: At or Above FL65