

STANDARD ARRIVAL CHART  
INSTRUMENT (STAR)

Transition Altitude 4000

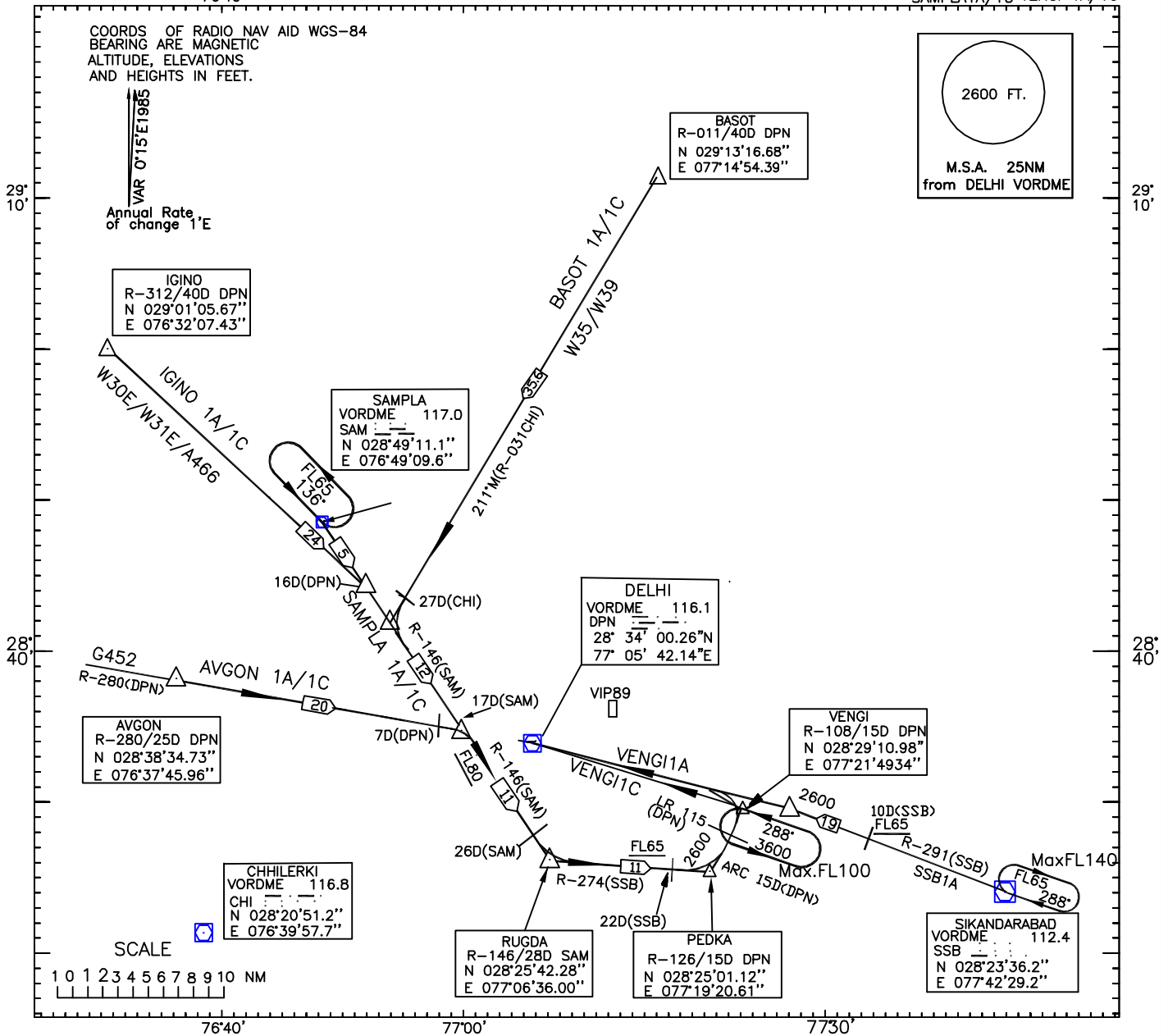
APP.127.9  
TWR.118.1

DELHI RWY 28  
IGINO1A/1C AVGON 1A/1C SSB 1A  
SAMPLA1A/1C VENGI 1A/1C

COORDS OF RADIO NAV AID WGS-84  
BEARING ARE MAGNETIC  
ALTITUDE, ELEVATIONS  
AND HEIGHTS IN FEET.

VAR 0°15'E1985  
Annual Rate of change 1'E

2600 FT.  
M.S.A. 25NM  
from DELHI VORDME



NOTE

- Basic indicator followed by  
 I. 1A is applicable to ILS Rwy28 .Final approach track is 284°M(110.3 PLM)  
 II.1C is applicable to VORDME Rwy28 Final approach track is 287°M(R-107 DPN)
- Lead radial for ILS/DME and VORDME is 115.
- Procedure from RUGDA  
 Proceed on track R-274(SSB) to PEDKA descending to FL65. At 22D(SSB) turn left to fly 15D(DPN) arc descending to 2600ft.Crossing LR-115 turn left to intercept final approach track of ILS or VORDME procedure.
- Procedure from VENGI:  
 VENGI 1A:Turn right to intercept LLZ(110.3 PLM) inbound track 284°M descending to 2600ft.  
 VENGI 1C:Turn right to establish on track 287°M(R-107) for VORDME Rwy28 descending to 2600ft
- Procedure from SIKANDARABAD:  
 SSB1A: Proceed on R-291(SSB) descending to FL65.Crossing 10D(SSB) descend to 2600ft. Continue on R-291 to intercept LLZ(110.3 PLM) inbound track 284°M.
- Refer to instrument approach chart for final approach procedure.
- Holding procedure at VORDME fix (VENGI) :  
 One minute left hand pattern inbound track 288°M (R-108).  
 Minimum holding altitude 3600 ft. Maximum holding level F100.  
 (Not available when VID 139 is active).

SPEED LIMIT

BELOW FL 100 230kt IAS Max.  
BELOW FL 65 210kt IAS Max.

LEGEND

FL65 At or Above FL65