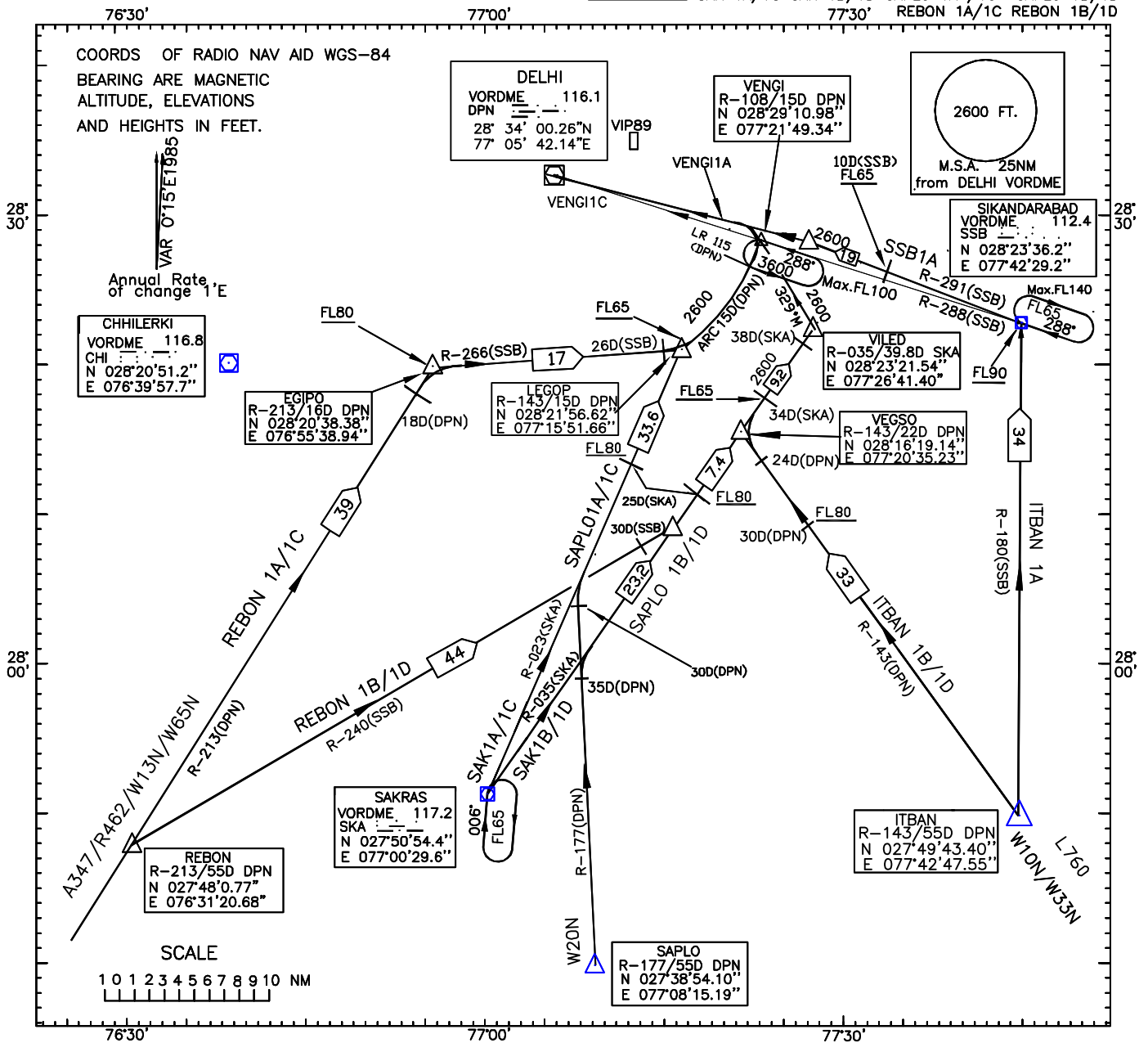


STANDARD ARRIVAL CHART
INSTRUMENT (STAR)

Transition Altitude 4000

APP.127.9
TWR.118.1

DELHI RWY 28
VENGI 1A/1C SSB 1A ITBAN 1A ITBAN 1B/1D
SAK 1A/1C SAK 1B/1D SAPLO 1A/1C SAPLO 1B/1D
77°30' REBON 1A/1C REBON 1B/1D



NOTE

- Basic indicator followed by
I. 1A/1B is applicable to ILS Rwy28. Final approach track is 284°M(110.3 PLM)
II. 1C/1D is applicable to VORDME Rwy28. Final approach track is 287°M(R-107 DPN)
- Lead radial for ILS and VORDME is 115.
- Procedure from LEGOP
Fly 15D(DPN) arc descending to 2600ft. Crossing LR-115 turn left to intercept the final approach track of ILS or VORDME procedure.
- Procedure from VENGI:
VENGI 1A: Turn right to intercept LLZ(110.3 PLM) inbound track 284°M descending to 2600ft.
VENGI 1C: Turn right to establish on track 287°M(R-107) for VORDME Rwy28 descending to 2600ft
- Procedure from VEGSO:
Proceed on track 035°M(R-035 SKA) to VILED descending to FL65. Crossing 34D(SKA) descend to 2600ft. At 38D(SKA) turn left on track 329°M to intercept final approach track of ILS or VORDME Procedure.
- Refer to instrument approach chart for final approach procedure.
- Holding procedure at VORDME fix (VENGI) :
One minute left hand pattern inbound track 288°M (R-108).
Minimum holding altitude 3600 ft. Maximum holding level F100.
(Not available when VID 139 is active).

SPEED LIMIT

- BELOW FL 100 230kt IAS Max.
- BELOW FL 65 210kt IAS Max.

LEGEND

FL65: At or Above FL65