

INSTRUMENT APPROACH CHART

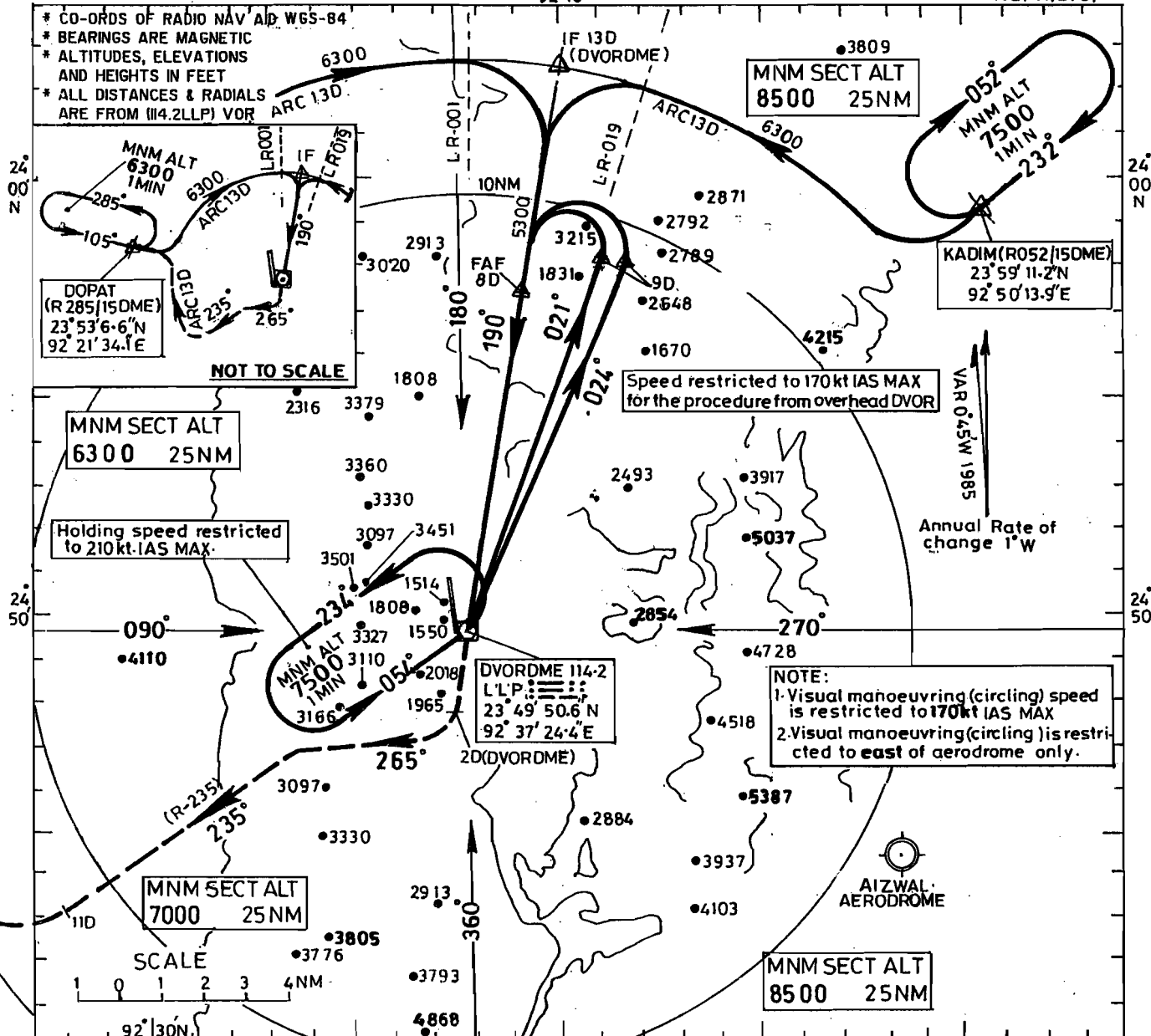
HEIGHTS RELATED TO AERODROME ELEV. 1398 ft.
THR RWY 17 ELEV. 1374 ft.
THR RWY 35 ELEV. 1395 ft.

TWR 122-25

LENGPUI INDIA

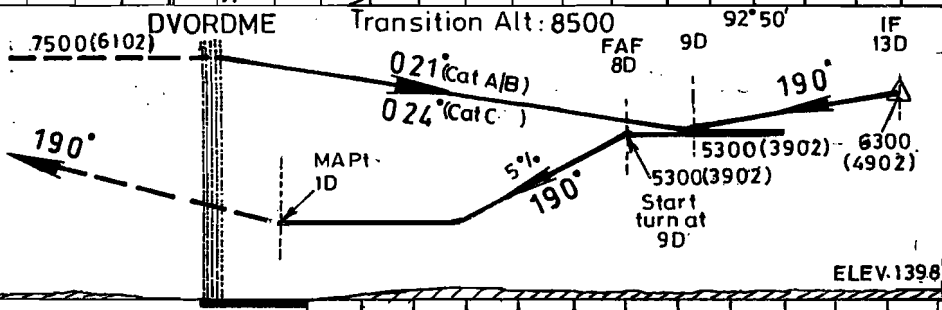
DVOR DME CIRCLING PROCEDURE

92°50' (Cat-A/B/C)



MISSED APPROACH

Speed restricted 160 kt. IAS Max. until established on track 235°M (R-235). Climb straight ahead until 2D. Then climbing turn RIGHT on heading 265 to establish on track 235°M (R-235). Continue climbing to 6300ft. and at IID turn RIGHT to fly DME arc of 13D to join holding at DOPAT



Nautical miles from THR RWY 17

O. C. A.			Distance (VORDME) / Altitude Information:							
CATEGORY OF AIRCRAFT	A/B	C	Distance (NM)	8D	7D	6D	5D	4D	3D	2D
STRAIGHT-IN	-	-	Altitude (FT)	5300	4980	4670	4370	4070	3760	3460
VISUAL CIRCLING	3240	3240	Ground speed / Rate of descent information							
			Ground Speed (Kt.)	90	110	130	150	170		
			Rate of descent (Ft/Min)	455	555	660	760	860		

DRG. NO AA1 / -1ALC / 01 / 17-07-03