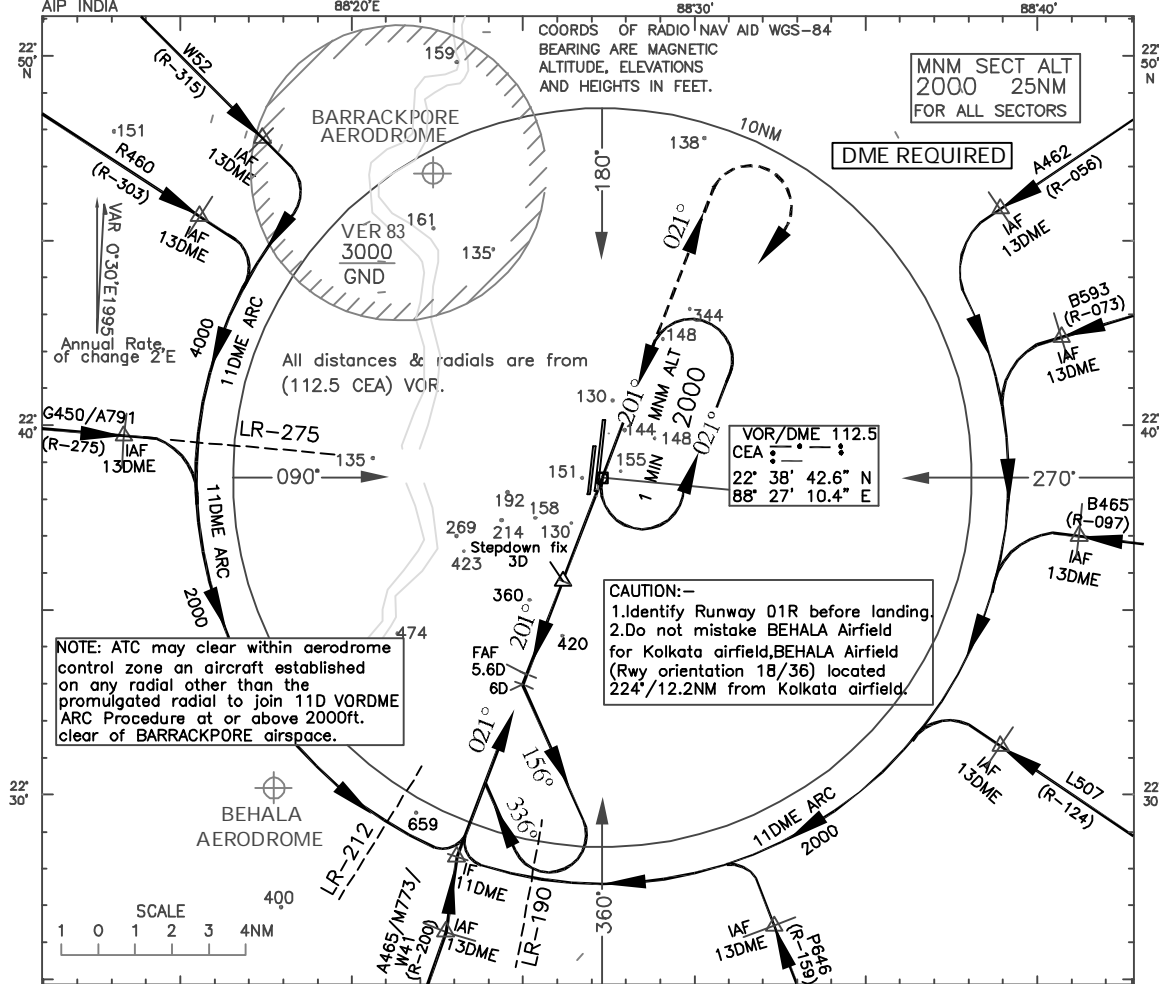


INSTRUMENT
APPROACH
CHART
AIP INDIA

AERODROME ELEV. 23ft.
HEIGHTS RELATED TO
THR RWY 01R-ELEV.20ft

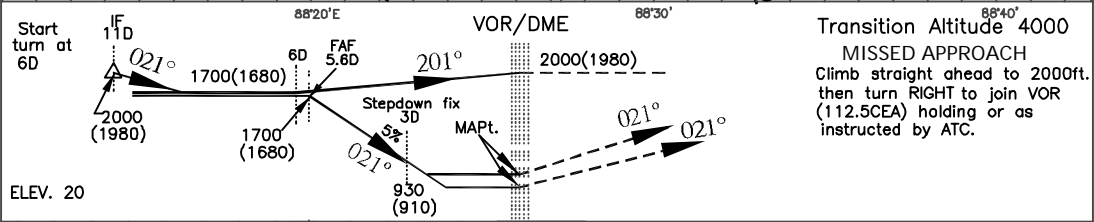
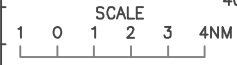
APP.127.9
TWR.118.1

KOLKATA
INDIA
VOR RWY 01R



NOTE: ATC may clear within aerodrome control zone an aircraft established on any radial other than the promulgated radial to join 11D VORDME ARC Procedure at or above 2000ft. clear of BARRACKPORE airspace.

CAUTION:-
1. Identify Runway 01R before landing.
2. Do not mistake BEHALA Airfield for Kolkata airfield, BEHALA Airfield (Rwy orientation 18/36) located 224°/12.2NM from Kolkata airfield.



Transition Altitude 4000
MISSED APPROACH
Climb straight ahead to 2000ft. then turn RIGHT to join VOR (112.5CEA) holding or as instructed by ATC.

ELEV. 20 NAUTICAL MILES FROM THR RWY 01R

O. C. A. (H)	Distance (VORDME) /Altitude information										
	A/B	C	D	5.6D	5D	4D	3D	2D			
CATEGORY OF AIRCRAFT				Distance(NM)							
STRAIGHT-IN	420(397)	450(427)	470(447)	Altitude (ft.)	1700	1530	1230	930	620		
VISUAL CIRCLING	720(697)	820(797)	820(797)	GROUND SPEED / RATE OF DESCENT INFORMATION							
					Ground speed (kt.)	80	100	120	140	160	180
					Rate of descent (ft/min)	405	505	610	710	810	910

AERODROME OPERATING MINIMA	CATEGORY A		CATEGORY B		CATEGORY C		CATEGORY D	
	ALS	ALS OUT	ALS	ALS OUT	ALS	ALS OUT	ALS	ALS OUT
NORMAL MINIMA								
STRAIGHT- IN	1600	2400	1600	2400	2000	2800	2400	3200
CIRCLING		3600		3600		4400		4800
RESTRICTED MINIMA								
STRAIGHT- IN	2000	2800	2000	2800	2400	3200	2800	3600
CIRCLING		3600		3600		5000		5000

DRG. NO. AAI/06-IALC/2005/16.06.07