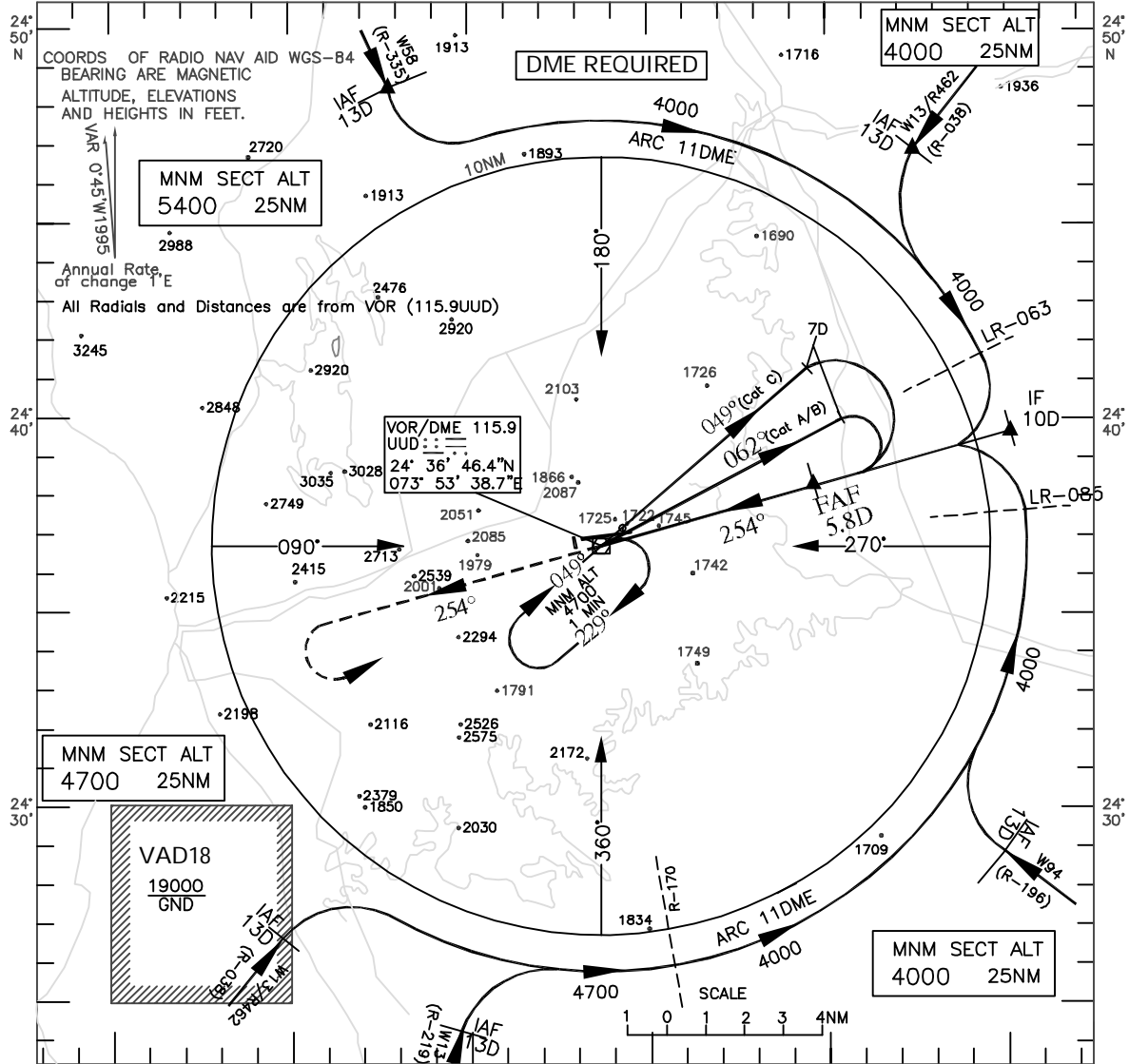


INSTRUMENT
APPROACH
CHART

AERODROME ELEV. 1684ft.
HEIGHTS RELATED TO
THR RWY 26 ELEV.1663ft

TWR.122.3

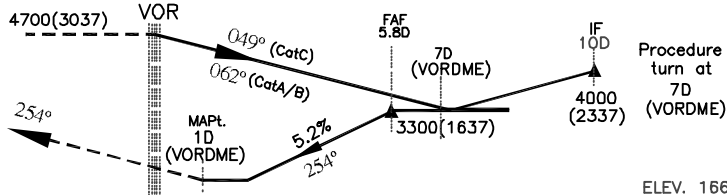
UDAIPUR
INDIA
VOR (X) RWY 26
(Cat.A/B&C)



Transition Alt.6000

Missed Approach

Climb straight ahead to 3100ft.,
then climbing turn LEFT
to VOR to join holding at 4700ft.
or as instructed by ATC.



Nautical miles from THR RWY 26

O C A. (H)			Distance /Altitude information					
CATEGORY OF AIRCRAFT	A/B	C	Distance(NM)	5.8D	5D	4D	3D	
STRAIGHT-IN	2220	2220	Altitude (ft.)	3300	3050	2740	2420	
CIRCLING	2470	3170	Rate of Descent /Ground speed information					
			Ground speed (kt.)	80	100	120	140	160
			Rate of descent (ft/min)	420	525	630	735	845

DRG. NO. AAI/33-IALC/98/08.07.07

Cancellation - AIP Suppl.no.23/2007