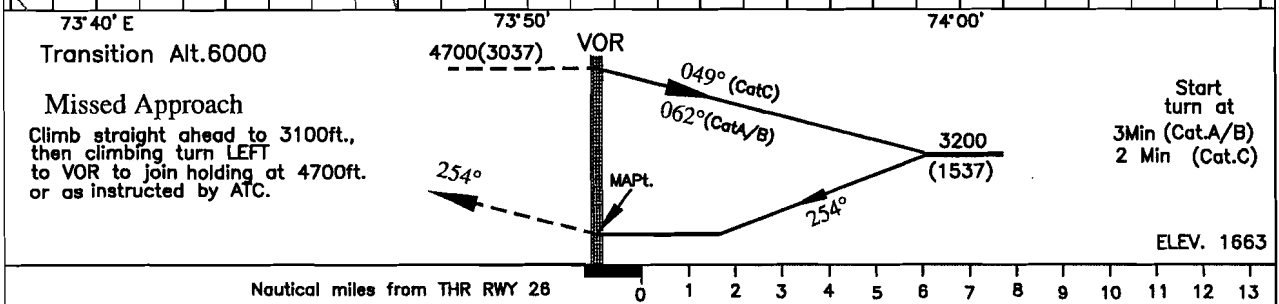
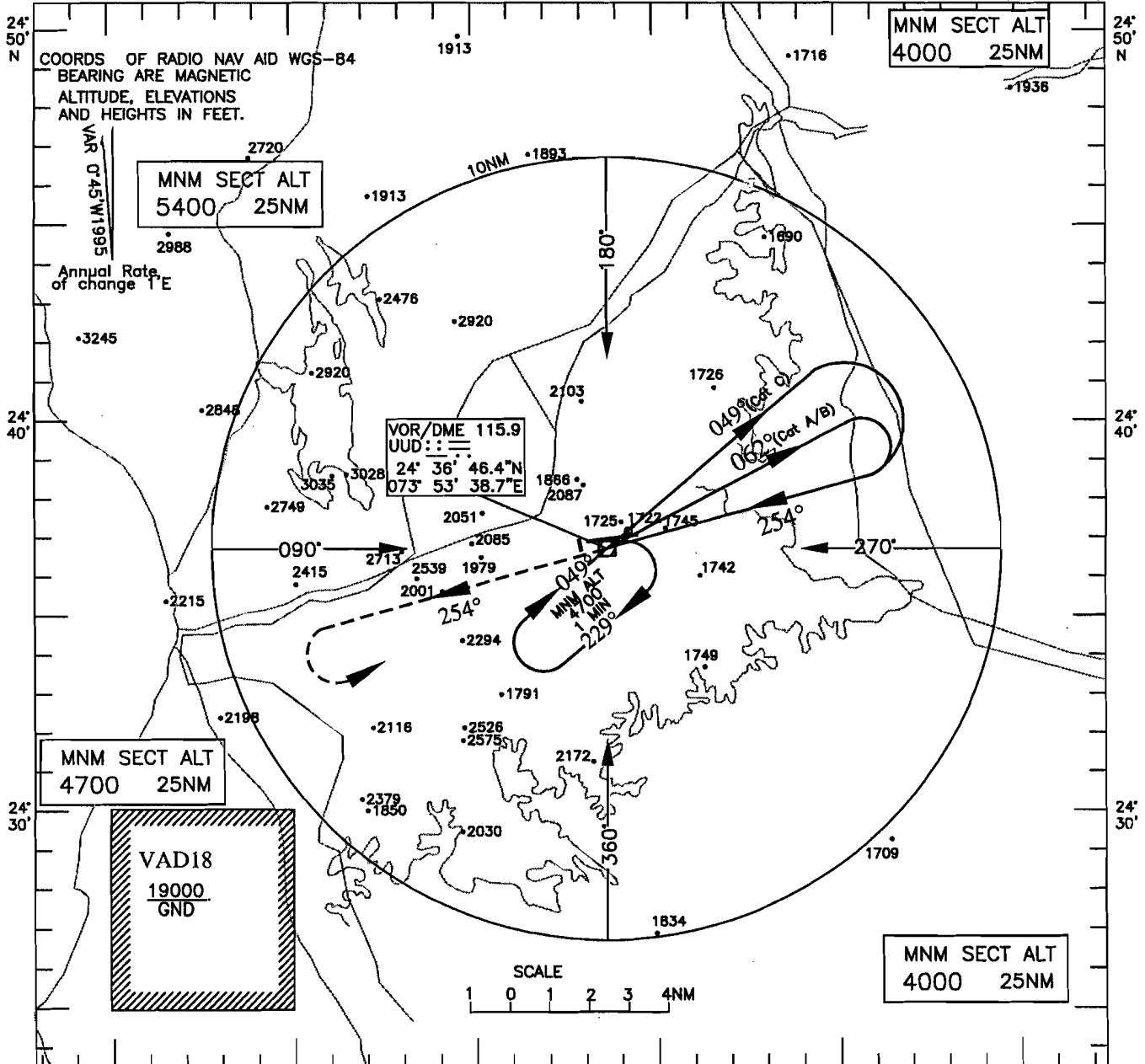


INSTRUMENT
APPROACH
CHART
73°40' E

AERODROME ELEV. 1684ft.
HEIGHTS RELATED TO
THR RWY 26 ELEV.1663ft

TWR.122.3

UDAIPUR
INDIA
VOR (Y) RWY 26
(Cat.A/B&C)



Nautical miles from THR RWY 26

| O C A. (H) | | |
|----------------------|------|------|
| CATEGORY OF AIRCRAFT | A/B | C |
| STRAIGHT-IN | 2310 | 2310 |
| CIRCLING | 2470 | 3170 |
| | | |
| | | |

DRG. NO. AAI/05-IALC/96/07.07.07