

**INSTRUMENT
APPROACH
CHART**

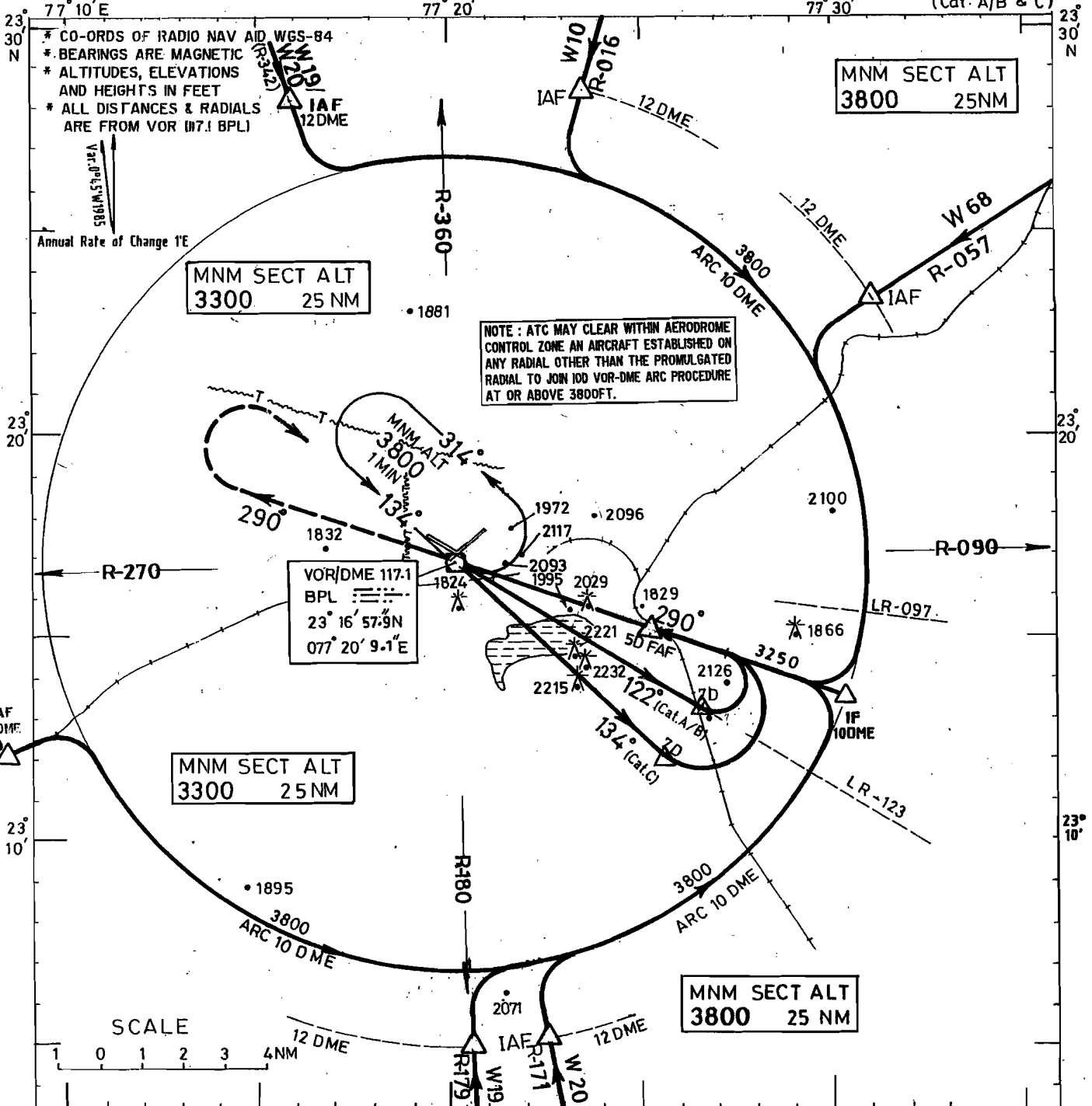
AERODROME ELEV 1719 ft
HEIGHTS RELATED TO
THR RWY 30 ELEV 1709 ft.

APP 118.05
TWR 118.05

BHOPAL

INDIA

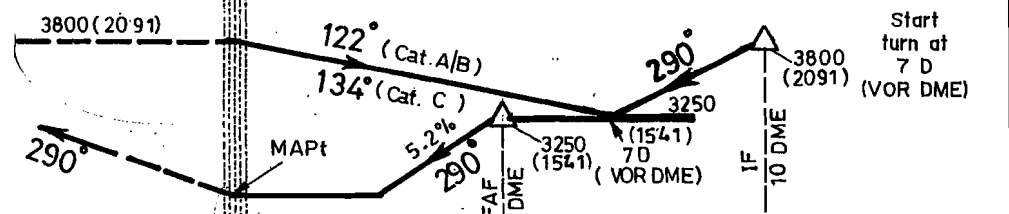
VOR (X) RWY 30
(Cat. A/B & C)



Transition Altitude 5000

VOR/DME

MISSED APPROACH
Climb straight ahead to 3800 ft, then turn RIGHT to VOR to join holding or as Instructed by ATC.



Nautical miles from THR RWY 30

O. C. A		Distance Altitude Information				
CATEGORY OF AIRCRAFT	A/B C	Distance (VOR DME) NM	4D		3D	
STRAIGHT-IN	2380 2380	Altitude (ft)	2940		2630	
VISUAL CIRCLING	2400 2630	Rate of descent Ground speed information				
		Ground speed (Kt.)	80	100	120	140 160
		Rate of descent (ft/min)	420	530	640	740 840