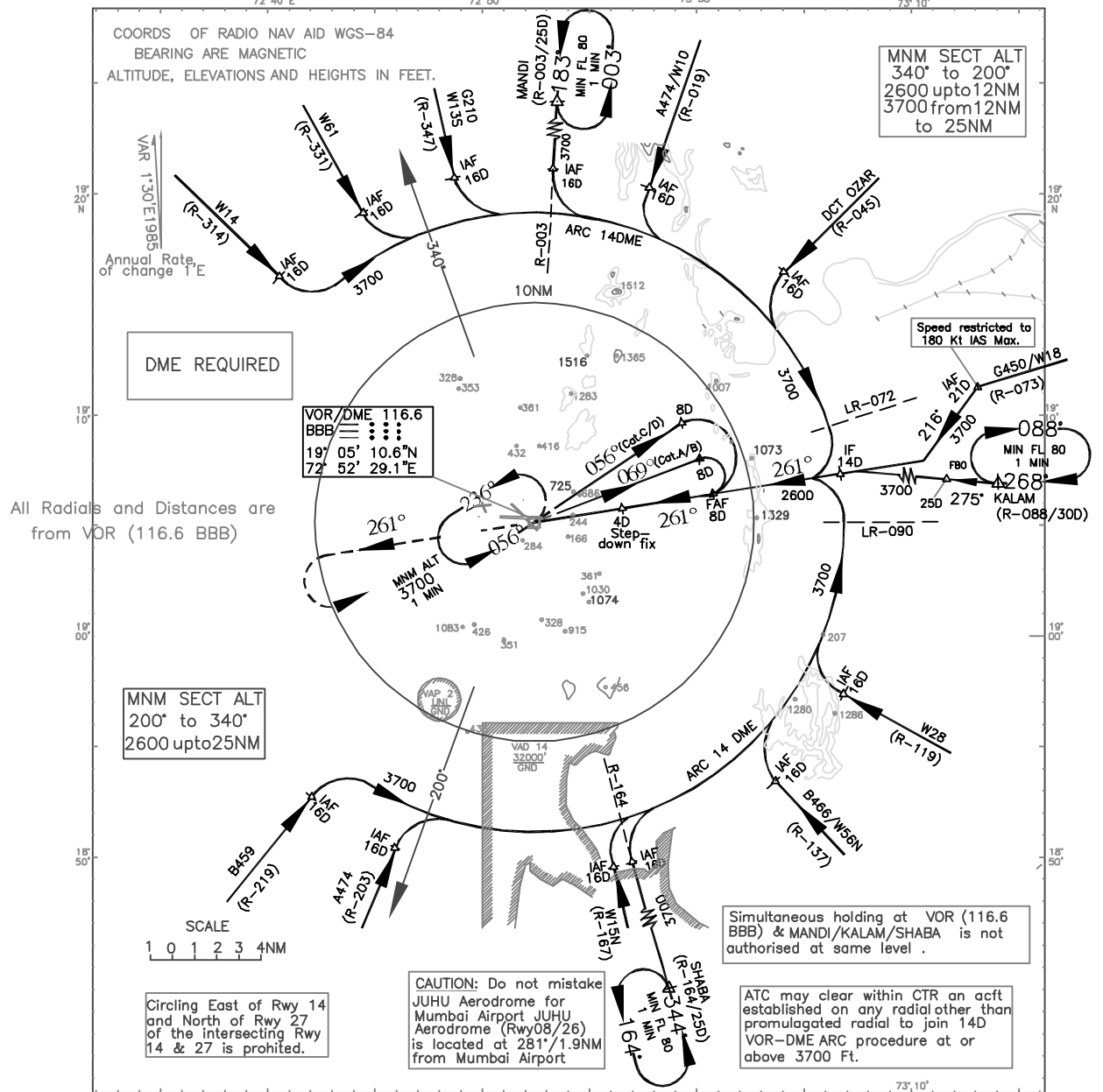


INSTRUMENT APPROACH CHART  
 AERODROME ELEV. 37ft. HEIGHTS RELATED TO THR RWY 27-ELEV.22ft  
 APP.127.9 TWR.118.1  
 MUMBAI INDIA  
 VOR RWY 27



All Radials and Distances are from VOR (116.6 BBB)

DME REQUIRED

VOR/DME 116.6  
 BBB  
 19° 05' 10.6"N  
 72° 52' 29.1"E

MNM SECT ALT  
 200° to 340°  
 2600 upto 25NM

SCALE  
 1 0 1 2 3 4 NM

Circling East of Rwy 14 and North of Rwy 27 of the intersecting Rwy 14 & 27 is prohibited.

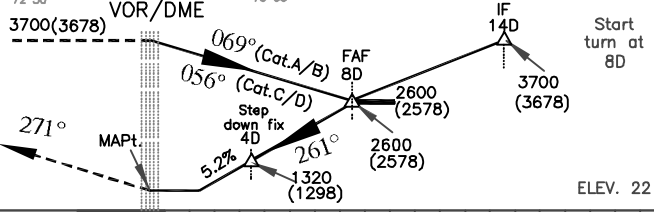
CAUTION: Do not mistake JUHU Aerodrome for Mumbai Airport JUHU Aerodrome (Rwy08/26) is located at 281°/1.9NM from Mumbai Airport

Simultaneous holding at VOR (116.6 BBB) & MANDI/KALAM/SHABA is not authorised at same level.

ATC may clear within CTR an acft established on any radial other than promulgated radial to join 14D VOR-DME ARC procedure at or above 3700 Ft.

Transition Altitude 4000

MISSED APPROACH  
 Climb straight ahead to 2600ft., then climbing turn LEFT to join VOR holding at 3700ft. or as instructed by ATC.



NAUTICAL MILES FROM THR RWY 27

O. C. A.				Distance /Altitude information for G.P.inoperative procedure						
CATEGORY OF AIRCRAFT	A/B	C	D	Distance(NM)	8D	7D	6D	5D	4D(SD)	3D
STRAIGHT-IN	1020	1020	1020	Altitude (ft.)	2600	2270	1950	1630	1320	1000
VISUAL CIRCLING	1380	1480	1700	Rate of Descent /Ground speed information						
	Ground speed (kt.)				80	100	120	140	160	180
	Rate of descent (ft./min)				420	525	630	735	845	950