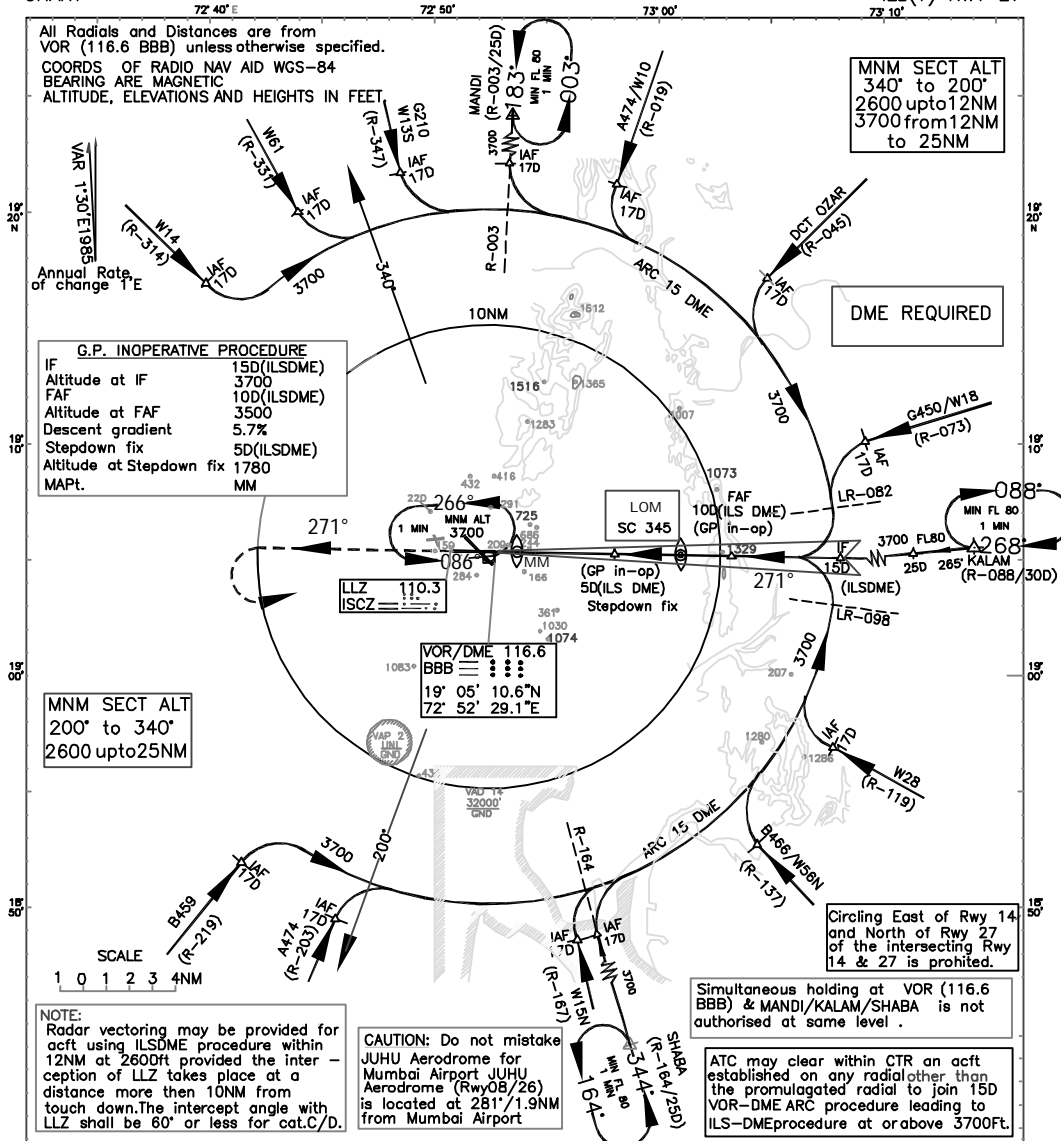


INSTRUMENT APPROACH CHART
 AERODROME ELEV. 37ft.
 HEIGHTS RELATED TO THR RWY 27-ELEV.22ft
 APP.127.9 TWR.118.1
 MUMBAI INDIA
 ILS(Y) RWY 27



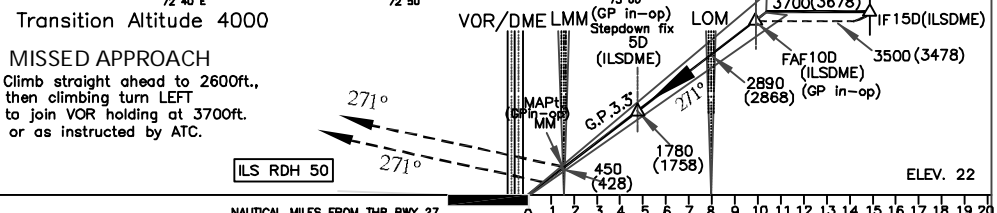
G.P. INOPERATIVE PROCEDURE
 IF 15D(ILSDME)
 Altitude at IF 3700
 FAF 10D(ILSDME)
 Altitude at FAF 3500
 Descent gradient 5.7%
 Stepdown fix 5D(ILSDME)
 Altitude at Stepdown fix 1780
 MAPt. MM

MNM SECT ALT
 200° to 340°
 2600 upto 25NM

NOTE:
 Radar vectoring may be provided for acft using ILSDME procedure within 12NM at 2600ft provided the interception of LLZ takes place at a distance more than 10NM from touch down. The intercept angle with LLZ shall be 60° or less for cat.C/D.

CAUTION: Do not mistake JUHU Aerodrome for Mumbai Airport JUHU Aerodrome (Rwy08/26) is located at 281°/1.9NM from Mumbai Airport

Simultaneous holding at VOR (116.6) & MANDI/KALAM/SHABA is not authorised at same level.
 ATC may clear within CTR an acft established on any radial other than the promulgated radial to join 15D VOR-DME ARC procedure leading to ILS-DME procedure at or above 3700ft.



O C A (H)				Distance (ILS DME)/Altitude information for G.P.inoperative procedure												
CAT. OF AIRCRAFT	A/B	C	D	Distance(NM)	10D	9D	8D	7D	6D	5D(SD)	4D	3D	2D	Rate of Descent /Ground speed information (G.P.in-op. procedure)		
STRAIGHT-IN	230(208)	230(208)	230(208)	Distance(NM)	3500	3140	2800	2450	2100	1780	1410	1070	720	Rate of Descent /Ground speed information (G.P.in-op. procedure)		
VISUAL CIRCLING	1380(1343)	1480(1443)	1700(1663)	Altitude (ft.)	3500	3140	2800	2450	2100	1780	1410	1070	720	Rate of Descent /Ground speed information (G.P.in-op. procedure)		
G.P.inoperative procedure				Ground speed (kt.)												
STRAIGHT-IN	540(518)	540(518)	540(518)	Rate of descent (ft/min)				80	100	120	140	160	180			
VISUAL CIRCLING	1380(1343)	1480(1443)	1700(1663)	Rate of descent (ft/min)				460	575	695	810	925	1040			
AERODROME OPERATING MINIMA				CATEGORY A		CATEGORY B		CATEGORY C		CATEGORY D						
	ALS	ALS OUT		ALS	ALS OUT	ALS	ALS OUT	ALS	ALS OUT	ALS	ALS OUT	ALS	ALS OUT			
NORMAL MINIMA (ILS)	800(550)	1200		800(550)	1200	800(550)	1200	800(550)	1200	800(550)	1200	800(550)	1200			
RESTRICTED MINIMA (ILS)	1000	1500		1000	1500	900(650)	1300	900(650)	1300	900(650)	1300	900(650)	1300			
NORMAL MINIMA (GP INOP)	1600	2400		1600	2400	2000	2800	2000	2800	2000	2800	2000	2800			
RESTRICTED MINIMA (GP INOP)	2000	2800		2000	2800	2800	3600	2800	3600	2800	3600	2800	3600			
NORMAL CIRCLING MINIMA		3600			3600		5000		5000		5000		5000			
RESTRICTED CIRCLING MINIMA		3600			3600		5000		5000		5000		5000			

DRG. NO. AAI/ -IALC/04/16.05.06