

TEL: 91-11-24632950 Extn: 2219/2233 AFS : VIDDYXAX FAX : 91-11-24615508 Email: gmais@aai.aero	INDIA AERONAUTICAL INFORMATION SERVICE AIRPORTS AUTHORITY OF INDIA RAJIV GANDHI BHAVAN SAFDARJUNG AIRPORT NEW DELHI – 110003	09/2011
		07 MAR 2011

File No. AAI/ATM/AIS/09-09/2011

Following supplement is issued for information, guidance and necessary action.



V.P. AGRAWAL
CHAIRMAN
AIRPORTS AUTHORITY OF INDIA

[EFFECTIVE DATE: 05 MAY 2011]

NON-RNAV STANDARD INSTRUMENT DEPARTURE PROCEUDRE COCHIN INTERNATIONAL AIRPORT

1. Introduction

- 1.1. These Non-RNAV Standard Instrument Departure Procedures (SIDs) are applicable for RWY27 when VOR (113.5 CIA) is not available.
- 1.2. The SIDs have been developed as per the provisions of Doc 8168 PANS-OPS Volume II.
- 1.3. Track guidance has been specified until the establishment of nominal track of the flight plan route.
- 1.4. All radials and distances are referenced to VOR (117.3 CIB) unless specifically mentioned.
- 1.5. List of SIDs

SID	Remarks
TUMLA 5, TUMLA 5A	DME (CIA) shall be available
ARONA 5, ARONA 5A	DME (CIA) shall be available
CALICUT 5	--
IGAMA 5	--
POMAN 5	--
COIMBATORE 5	--

2. Condition common to all SIDs.

- 2.1. Minimum climb gradient of 7% (425 FT/NM) is specified for departure until passing 3000 FT.
- 2.2. Do not climb above 7500 FT unless authorised by ATC.
- 2.3. ATC at its discretion may further modify the vertical restriction in order to expedite climb, descent or for traffic separation purpose.

3. Radio Communication Failure (RCF) procedure

- 3.1. Continue to follow SID maintain 7500 FT or the last assigned level by ATC whichever is higher, till 30 D (CIB), then climb to cleared flight level.

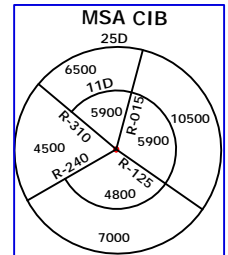
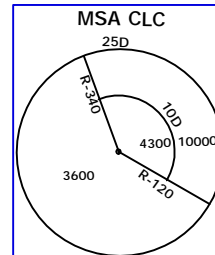
+++++++

STANDARD INSTRUMENT DEPARTURE PROCEDURE

COCHIN INTERNATIONAL AIRPORT RWY27 CALICUT 5, IGAMA 5, POMAN 5

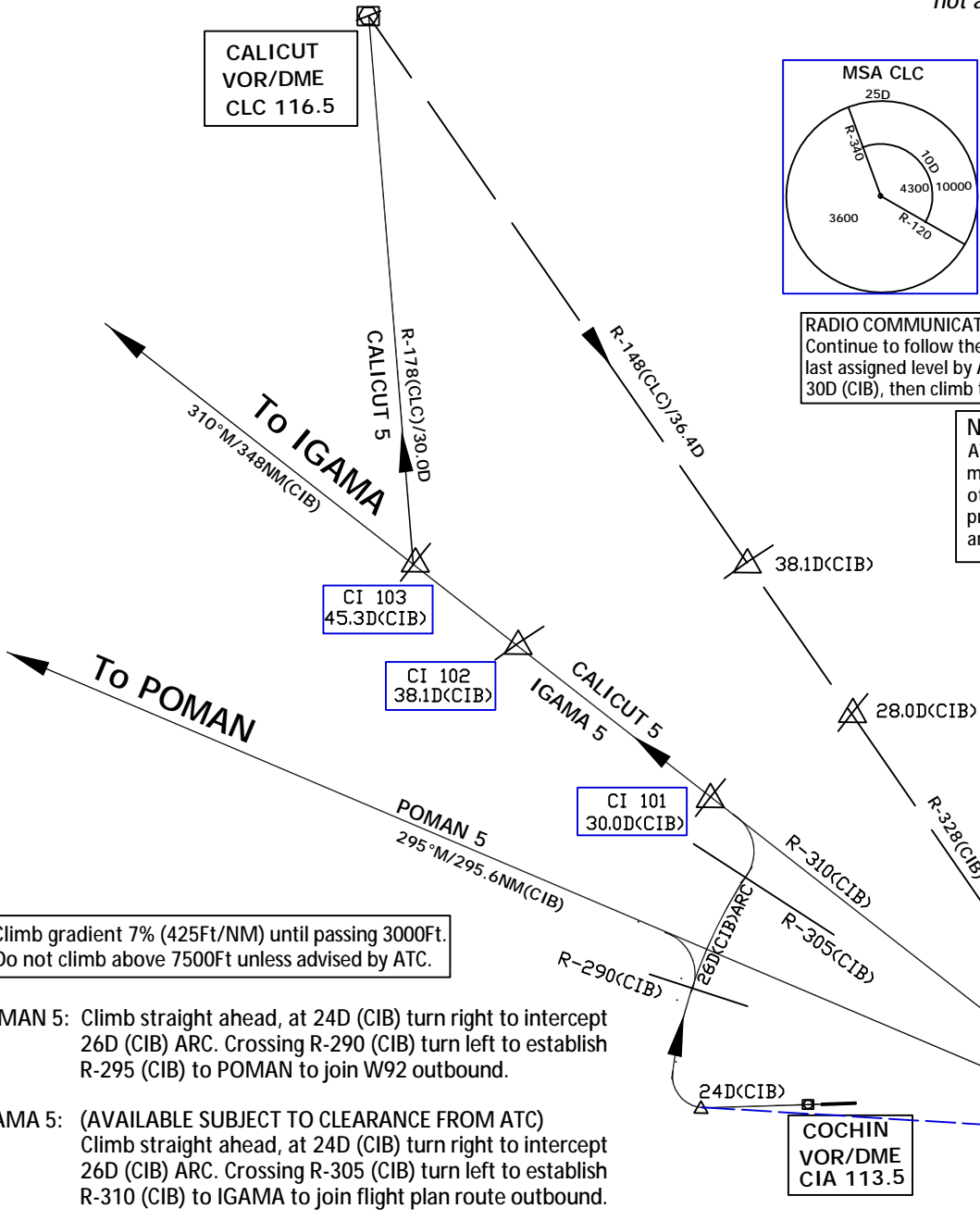
NOTE - These procedures are applicable when VOR (CIA) is not available.

CALICUT
VOR/DME
CLC 116.5



RADIO COMMUNICATION FAILURE PROCEDURES:
Continue to follow the SID, maintain 7500ft or the last assigned level by ATC; whichever is higher till 30D (CIB), then climb to cleared flight level.

NOTE:
ATC at its own discretion may modify the SIDs or issue other instructions for providing separation from arriving or departing traffic.



1. Climb gradient 7% (425Ft/NM) until passing 3000Ft.
2. Do not climb above 7500Ft unless advised by ATC.

POMAN 5: Climb straight ahead, at 24D (CIB) turn right to intercept 26D (CIB) ARC. Crossing R-290 (CIB) turn left to establish R-295 (CIB) to POMAN to join W92 outbound.

IGAMA 5: (AVAILABLE SUBJECT TO CLEARANCE FROM ATC)
Climb straight ahead, at 24D (CIB) turn right to intercept 26D (CIB) ARC. Crossing R-305 (CIB) turn left to establish R-310 (CIB) to IGAMA to join flight plan route outbound.

CALICUT 5: Climb straight ahead, at 24D (CIB) turn right to intercept 26D (CIB) ARC. Crossing R-305 (CIB) turn left to establish R-310 (CIB). At CI 103 turn right to intercept R-178 (CLC) Calicut VOR/DME, to join flight plan route outbound.

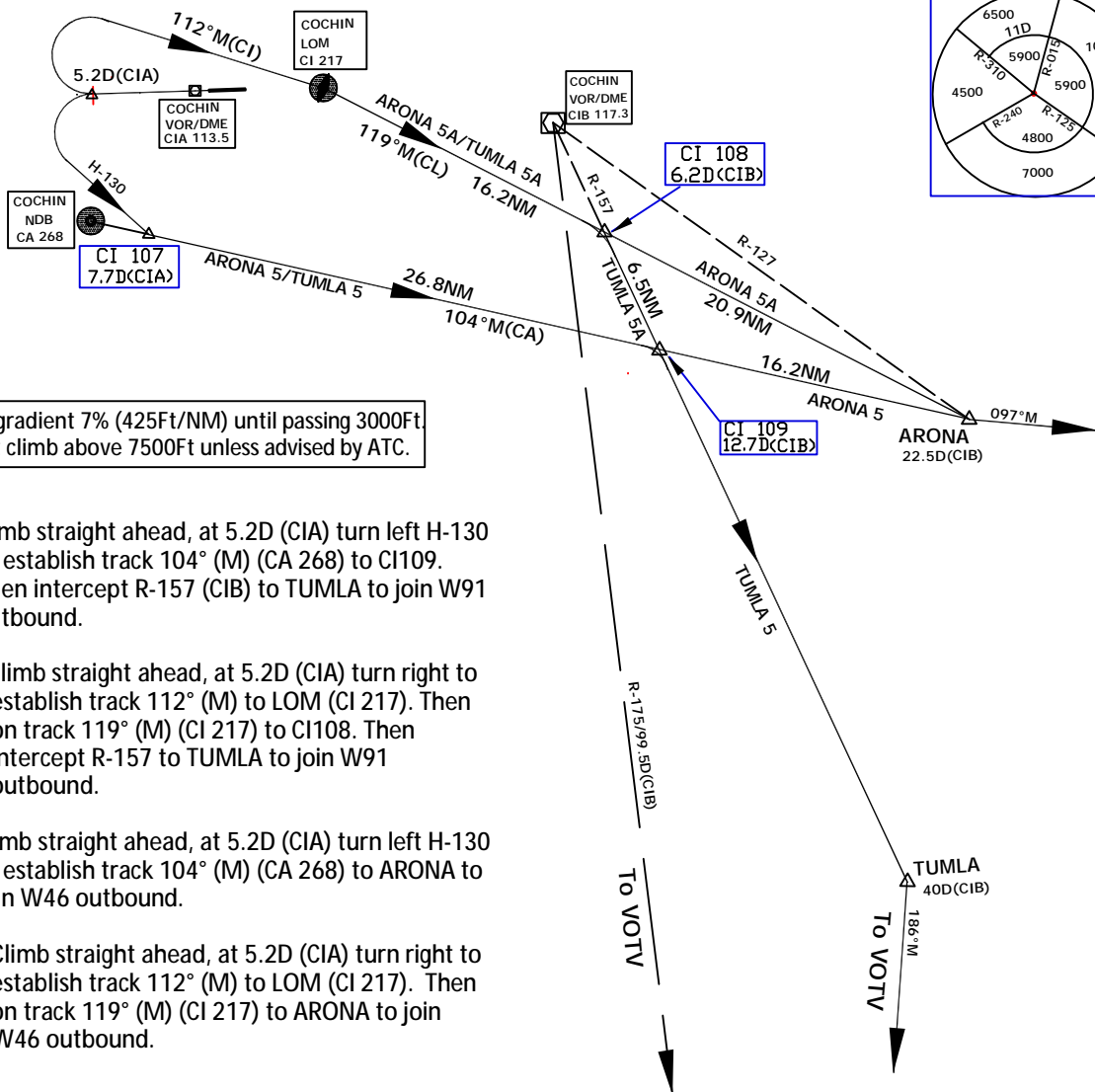
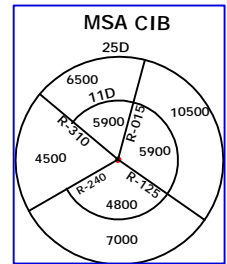
STANDARD INSTRUMENT DEPARTURE PROCEDURE

COCHIN INTERNATIONAL AIRPORT RWY27 TUMLA 5, TUMLA 5A, ARONA 5, ARONA 5A

RADIO COMMUNICATION FAILURE PROCEDURES:
Continue to follow the SID, maintain 7500Ft or the last assigned level by ATC; whichever is higher till 30D (CIB), then climb to cleared flight level.

NOTE:
ATC at its own discretion may modify the SIDs or issue other instructions for providing separation from arriving or departing traffic.

NOTE:
1. These procedures are applicable when VOR (CIA) is not available.
2. DME (CIA) shall be available.



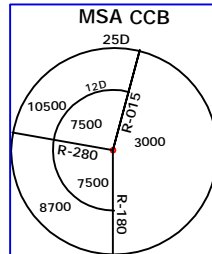
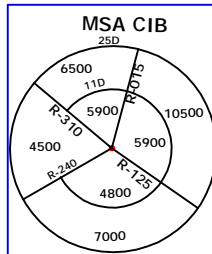
1. Climb gradient 7% (425Ft/NM) until passing 3000Ft.
2. Do not climb above 7500Ft unless advised by ATC.

- TUMLA5:** Climb straight ahead, at 5.2D (CIA) turn left H-130 to establish track 104° (M) (CA 268) to CI109. Then intercept R-157 (CIB) to TUMLA to join W91 outbound.
- TUMLA5A:** Climb straight ahead, at 5.2D (CIA) turn right to establish track 112° (M) to LOM (CI 217). Then on track 119° (M) (CI 217) to CI108. Then intercept R-157 to TUMLA to join W91 outbound.
- ARONA5:** Climb straight ahead, at 5.2D (CIA) turn left H-130 to establish track 104° (M) (CA 268) to ARONA to join W46 outbound.
- ARONA5A:** Climb straight ahead, at 5.2D (CIA) turn right to establish track 112° (M) to LOM (CI 217). Then on track 119° (M) (CI 217) to ARONA to join W46 outbound.

STANDARD INSTRUMENT DEPARTURE PROCEDURE

COCHIN INTERNATIONAL AIRPORT RWY27 COIMBATORE 5

NOTE - These procedures are applicable when VOR (CIA) is not available.



1. Climb gradient 7% (425Ft/NM) until passing 3000Ft.
2. Do not climb above 7500Ft unless advised by ATC.

COIMBATORE 5: Climb straight ahead, at 24D (CIB) turn right to intercept 26D (CIB) ARC. Crossing R-348 (CIB) turn left to intercept R-231 (CCB) to Coimbatore VOR/DME to join the flight plan route outbound.

Note: ATC may permit the aircraft to intercept R-231 (CCB) crossing R-222 (CCB) subject to traffic.

RADIO COMMUNICATION FAILURE PROCEDURES:
Continue to follow the SID, maintain 7500Ft or the last assigned level by ATC; whichever is higher till 30D (CIB), then climb to cleared flight level.

NOTE:
ATC at its own discretion may modify the SIDs or issue other instructions for providing separation from arriving or departing traffic.

